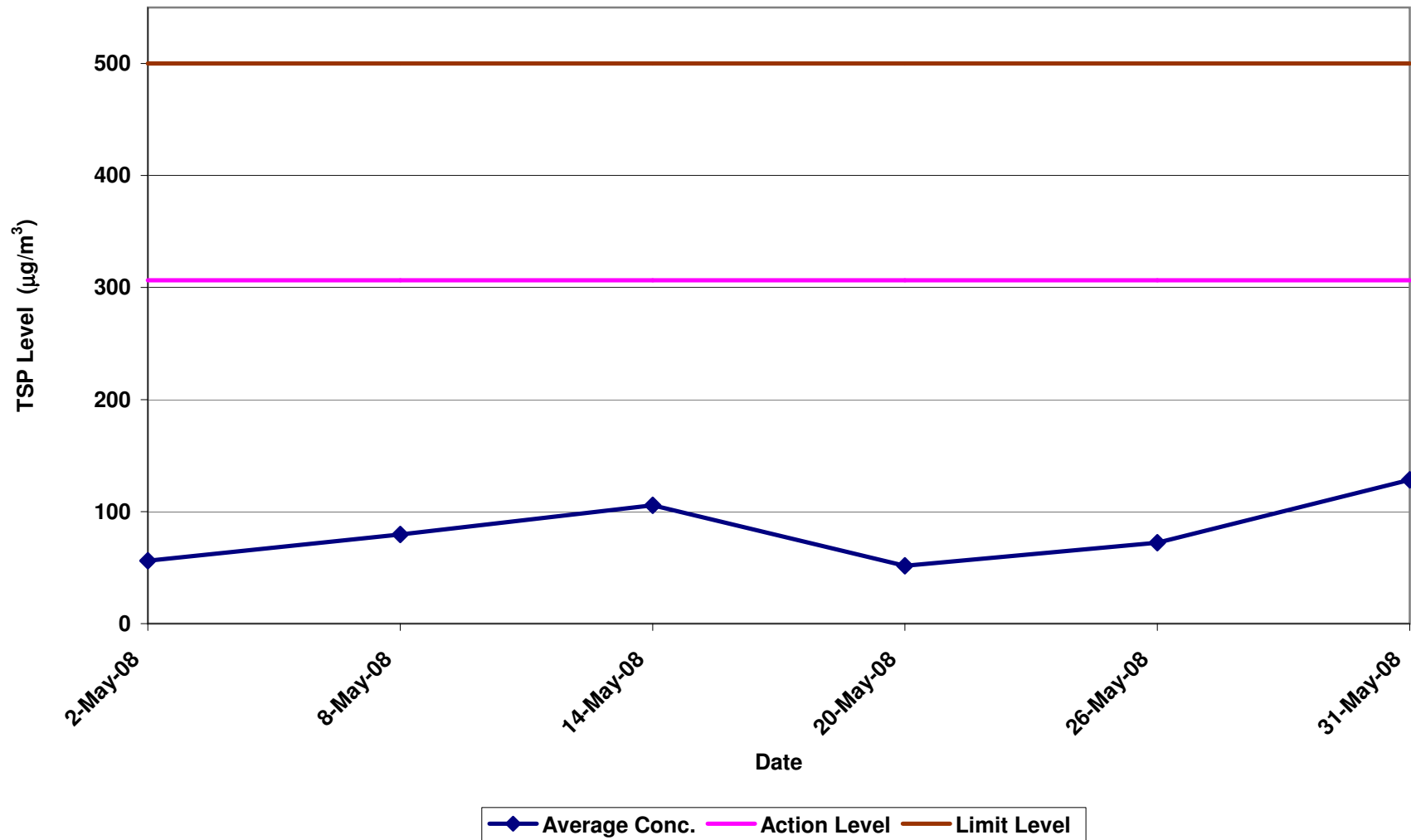


Contract No. DC/2007/12 - Design and Construction of Tsuen Wan Drainage Tunnel

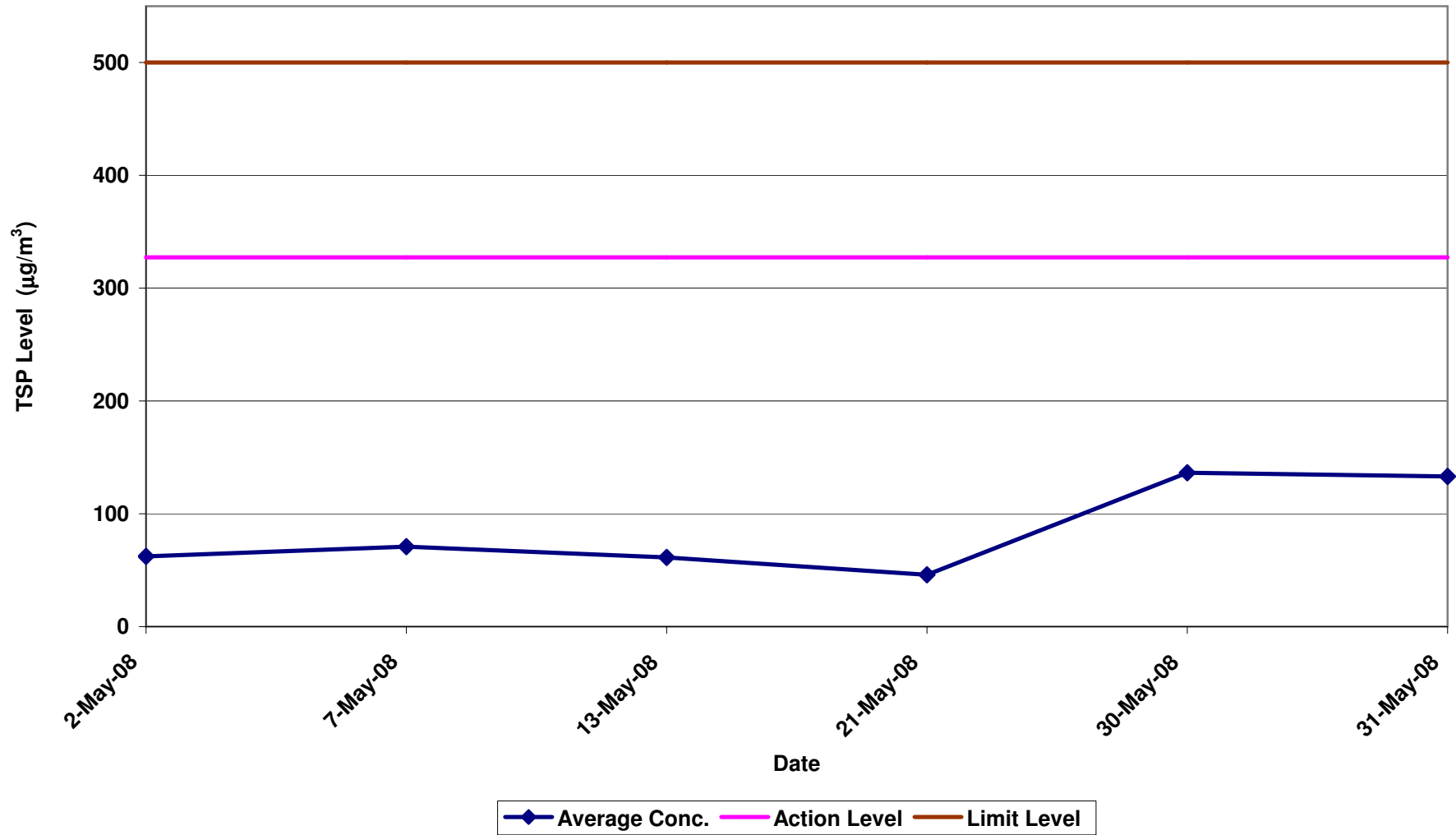
Air Quality Impact Monitoring Results (1-Hour TSP)

Location	Monitoring Date	Weather Conditions	Wind Speed with Direction (m/s)	Temp (°C)	Timer-I	Timer-F	Time (mins)	Flow-I (CFM)	Flow-F (CFM)	Flow-I (m ³ /min)	Flow-F (m ³ /min)	Flow-avg (m ³ /min)	Volume (m ³)	Weight-I (g)	Weight-F (g)	Weight-diff. (g)	1-hr TSP (µg/m ³)	Average 1-Hr TSP (µg/m ³)	Action/Limit Levels (µg/m ³)	Observation / Site Condition	Remark
Sik Sik Yuen Ho Fung College Intake (ASR1)	02-May-08	Cloudy	0.8 E	26	554149	554249	60.0	39	39	1.09	1.09	1.09	65.69	2.7659	2.7702	0.0043	65.5	56.2	306.6/500	N/A	
		Cloudy	0.8 E	26	554249	554350	60.6	39	39	1.09	1.09	1.09	66.35	2.7657	2.7680	0.0023	34.7				
		Cloudy	0.8 E	26	554350	554450	60.0	39	39	1.09	1.09	1.09	65.69	2.7712	2.7757	0.0045	68.5				
	08-May-08	Sunny	0.7 SW	27	554450	554550	60.0	39	40	1.09	1.11	1.10	66.05	2.7469	2.7512	0.0043	65.1				
		Sunny	0.7 SW	27	554550	554650	60.0	40	40	1.11	1.11	1.11	66.40	2.7638	2.7694	0.0056	84.3				
		Sunny	0.7 SW	27	554650	554750	60.0	39	40	1.09	1.11	1.10	66.05	2.7592	2.7651	0.0059	89.3				
	14-May-08	Cloudy	1 S	27	554750	554853	61.8	38	38	1.08	1.08	1.08	66.93	2.801	2.8099	0.0089	133.0				
		Cloudy	1 S	27	554853	554957	62.4	38	38	1.08	1.08	1.08	67.58	2.7828	2.7877	0.0049	72.5				
		Cloudy	1 S	27	554957	555059	61.2	38	38	1.08	1.08	1.08	66.28	2.7691	2.7765	0.0074	111.6				
	20-May-08	Cloudy	3.3 E	21	555061	555155	56.4	39	39	1.09	1.09	1.09	61.75	2.8171	2.8210	0.0039	63.2				
		Cloudy	3.3 E	21	555155	555258	61.8	39	39	1.09	1.09	1.09	67.66	2.7816	2.7845	0.0029	42.9				
		Cloudy	3.3 E	21	555258	555358	60.0	39	39	1.09	1.09	1.09	65.69	2.8010	2.8042	0.0032	48.7				
	26-May-08	Fine	1.3 S	29	555358	555458	60.0	38	38	1.08	1.08	1.08	64.98	2.7452	2.7503	0.0051	78.5				
		Fine	1.3 S	29	555458	555558	60.0	38	38	1.08	1.08	1.08	64.98	2.7307	2.7352	0.0045	69.3				
		Fine	1.3 S	29	555558	555652	56.4	38	38	1.08	1.08	1.08	61.08	2.7235	2.7277	0.0042	68.8				
	31-May-08	Cloudy	0.8 SE	27	555652	555752	60.0	40	40	1.11	1.11	1.11	66.40	2.7382	2.7477	0.0095	143.1				
		Cloudy	0.8 SE	27	555752	555852	60.0	40	39	1.11	1.09	1.10	66.05	2.7548	2.7618	0.0070	106.0				
		Cloudy	0.8 SE	27	555852	555952	60.0	40	39	1.11	1.09	1.10	66.05	2.7471	2.7561	0.0090	136.3				
Hong Hoi Chee Hong Temple Intake (ASR3)	02-May-08	Cloudy	0.8 E	26	523303	523407	62.4	38	38	1.08	1.08	1.08	67.30	2.7564	2.7631	0.0067	99.5	62.3	327.4/500	N/A	
		Cloudy	0.8 E	26	523407	523510	61.8	38	38	1.08	1.08	1.08	66.66	2.7936	2.7965	0.0029	43.5				
		Cloudy	0.8 E	26	523510	523612	61.2	38	38	1.08	1.08	1.08	66.01	2.7790	2.7819	0.0029	43.9				
	07-May-08	Sunny	0.7 SW	27	523622	523722	60.0	39	39	1.09	1.09	1.09	65.27	2.7654	2.7713	0.0059	90.4				
		Sunny	0.7 SW	27	523722	523822	60.0	39	39	1.09	1.09	1.09	65.27	2.7355	2.7386	0.0031	47.5				
		Sunny	0.7 SW	27	523822	523922	60.0	39	39	1.09	1.09	1.09	65.27	2.7580	2.7629	0.0049	75.1				
	13-May-08	Fine	0.8 SW	28	523924	524024	60.0	38	38	1.08	1.08	1.08	64.72	-	-	-	Void				
		Fine	0.8 SW	28	524024	524118	56.4	38	38	1.08	1.08	1.08	60.83	2.7610	2.7650	0.0040	65.8				
		Fine	0.8 SW	28	524118	524221	61.8	38	38	1.08	1.08	1.08	66.66	2.7431	2.7469	0.0038	57.0				
	21-May-08	Cloudy	3.3 E	21	524222	524320	58.8	38	39	1.08	1.09	1.08	63.69	2.7172	2.7185	0.0013	20.4				
		Cloudy	3.3 E	21	524320	524416	57.6	38	38	1.08	1.08	1.08	62.13	2.8160	2.8192	0.0032	51.5				
		Cloudy	3.3 E	21	524416	524512	57.6	39	38	1.09	1.08	1.08	62.39	2.8152	2.8193	0.0041	65.7				
	30-May-08	Fine	1.3 S	29	524515	524607	55.2	38	38	1.08	1.08	1.08	59.54	2.7995	2.8062	0.0067	112.5				
		Fine	1.3 S	29	524607	524700	55.8	38	38	1.08	1.08	1.08	60.19	2.8196	2.829	0.0094	156.2				
		Fine	1.3 S	29	524700	524792	55.2	39	38	1.09	1.08	1.08	59.79	2.7862	2.7946	0.0084	140.5				
	31-May-08	Cloudy	0.8 SE	26	524792	524890	58.8	39	38	1.09	1.08	1.08	63.69	2.7283	2.7354	0.0071	111.5				
		Cloudy	0.8 SE	26	524890	524990	60.0	38	39	1.08	1.09	1.08	64.99	-	-	-	Void				
		Cloudy	0.8 SE	26	524990	525091	60.6	39	39	1.09	1.09	1.09	65.92	2.793	2.8032	0.0102	154.7				
Long Beach Gardens Outfall (ASR4)	02-May-08	Cloudy	0.8 E	26	578904	579106	61.2	39	39	1.09	1.09	1.09	66.57	2.7675	2.7706	0.0031	46.6	48.7	336.6/500	N/A	
		Cloudy	0.8 E	26	579106	579210	62.4	39	39	1.09	1.09	1.09	67.89	2.7804	2.7841	0.0037	54.5				
		Cloudy	0.8 E	26	579210	579312	61.2	39	39	1.09	1.09	1.09	66.57	2.7660	2.7690	0.0030	45.1				
	08-May-08	Sunny	0.7 SW	27	579312	579405	55.8	40	39	1.10	1.09	1.09	60.96	2.7328	2.7368	0.0040	66.6				
		Sunny	0.7 SW	27	579405	579500	57.0	39	39	1.09	1.09	1.09	62.01	2.7710	2.7791	0.0081	130.6				
		Sunny	0.7 SW	27	579500	579595	57.0	40	40	1.10	1.10	1.10	62.53	2.7817	2.7869	0.0052	83.2				
	14-May-08	Cloudy	1 S	27	579595	579699	62.4	40	40	1.10	1.10	1.10	68.46	2.7792	2.7962	0.0170	248.3				
		Cloudy	1 S	27	579699	579801	61.2	40	40	1.10	1.10	1.10	67.14	2.7758	2.7890	0.0132	196.6				
		Cloudy	1 S	27	579801	579904	61.8	40	40	1.10	1.10	1.10	67.80	2.7925	2.8032	0.0107	157.8				
	20-May-08	Cloudy	3.3 E	21	579904	579933	60.6	40	41	1.10	1.11	1.10	66.76	2.7432	2.7456	0.0024	35.9				
		Cloudy	3.3 E	21	579933	579934	60.6	41	40	1.11	1.10	1.10	66.76	2.7381	2.7401	0.0020	30.0				
		Cloudy	3.3 E	21	579934	579935	60.6	40	39	1.10	1.09	1.09	66.20	2.7286	2.7304	0.0018	27.2				
	26-May-08	Fine	1.3 S	29	579935	579934	58.8	39	40	1.09	1.10	1.09	64.24	2.793	2.7991	0.0061	96.0				
		Fine	1.3 S	29	579934	579432	58.8	40	40	1.10	1.10	1.10	64.51	2.7882	2.7939	0.0057	88.4				
		Fine	1.3 S	29	579432	579530	58.8	40	39	1.10	1.09	1.09	64.24	2.7391	2.7397	0.0006	9.3				
	31-May-08	Cloudy	0.8 SE	26	579530	579627	58.2	40	40	1.10	1.10	1.10	63.85	2.7632	2.7705	0.0073	114.3				
		Cloudy	0.8 SE	26	579627	579725	58.8	40	39	1.10	1.09	1.09	64.24	2.7694	2.7735	0.0041	63.8				
		Cloudy	0.8 SE	26	579725	579823	58.8	39	40	1.09	1.10	1.09	64.24	2.7446	2.751	0.0064	99.6				
Greenview Terrace Outfall (ASR5)	02-May-08	Cloudy	0.8 E	26	549751	549853	61.2	39	39	1.09	1.09	1.09	66.57	2.7657	2.7662	0.0005	7.5	34.6	329.2/500	N/A	
		Cloudy	0.8 E	26	549853	549956	61.8	39	39	1.09	1.09	1.09	67.23	2.7232	2.7269	0.0037	55.0				
		Cloudy	0.8 E	26	549956	550060	62.4	39	39	1.09	1.09	1.09	67.88	2.7557	2.7585	0.0028	41.2				
	08-May-08	Sunny	0.7 SW	27	550064	550167	61.8	38	38	1.08	1.08	1.08	66.66	2.746	2.753	0.0070	105.0				
		Sunny	0.7 SW	27	550167	550270	61.8	39	39	1.09	1.09	1.09	67.23	2.7495	2.7542	0.0047	69.9				
		Sunny	0.7 SW	27	550270	550372	61.2	38	39	1.08	1.09	1.08	66.29	2.7378	2.7445	0.0067	101.1				
	14-May-08	Cloudy	1 S	27	550373	550474	60.6	39	39	1.09	1.09	1.09	65.92	2.8137	2.8178	0.0041	62.2				
		Cloudy	1 S	27	550474	550576	61.2	39	39	1.09	1.09	1.09	66.57	2.7780	2.7892	0.0112	168.2				
		Cloudy	1 S	27	550576	550677	60.6	39	39	1.09	1.09	1.09	65.92	2.7818	2.7902	0.0084	127.4				
	20-May-08	Cloudy	3.3 E	21	550677	550775	58.8	39	38	1.09	1.08	1.08	63.69	2.7524	2.7587	0.0063	98.9				
		Cloudy	3.3 E	21	550775	550873	58.8	38	38	1.08	1.08	1.08	63.42	2.7437	2.7476	0.0039	61.6				
		Cloudy	3.3 E	21	550873	550972	59.4	40	40	1.10	1.10	1.10	65.17	2.7787	2.7829	0.0042	64.5				
	26-May-08	Fine	1.3 S	29	550972	551070	58.8	38	38	1.08	1.08	1.08	63.42	2.8414	2.8457						

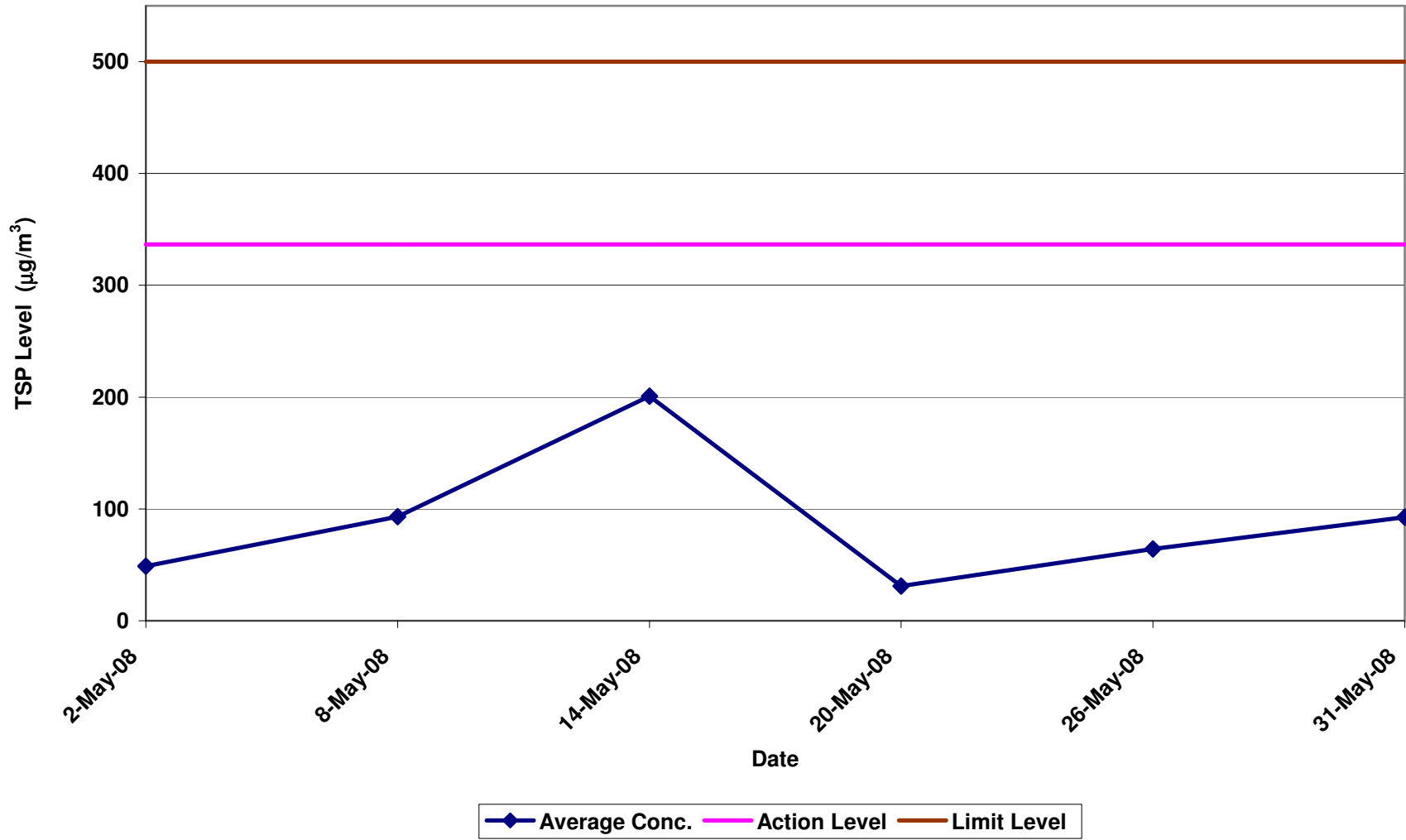
Contract No. DC/2007/12 - Design and Construction of Tsuen Wan Drainage Tunnel
Air Quality Monitoring (1-hr TSP) Results at Sik Sik Yuen Ho Fung College (ASR1)
May 2008



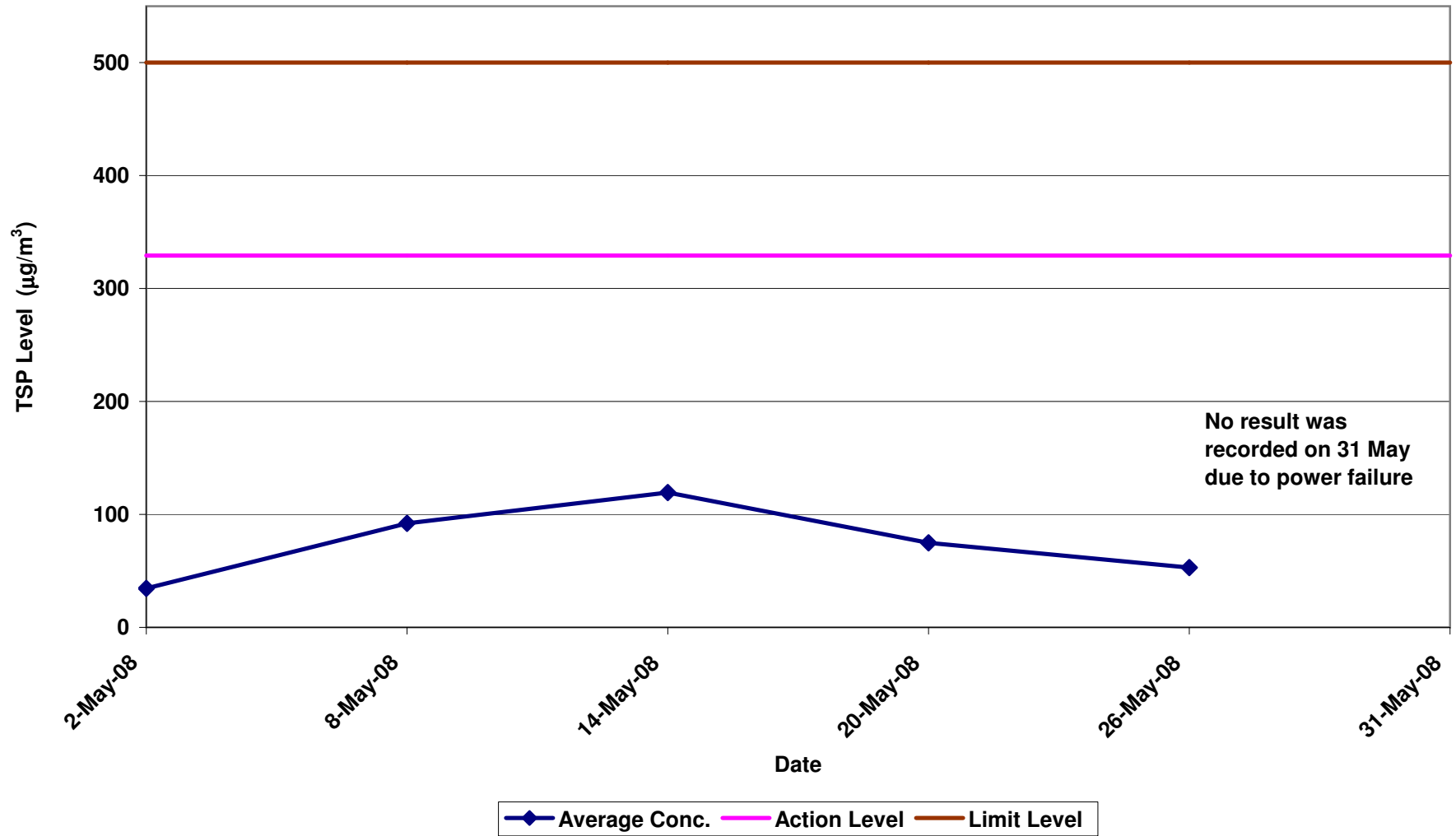
Contract No. DC/2007/12 - Design and Construction of Tsuen Wan Drainage Tunnel
Air Quality Monitoring (1-hr TSP) Results at Hong Hoi Chee Hong Temple (ASR3)
May 2008



Contract No. DC/2007/12 - Design and Construction of Tsuen Wan Drainage Tunnel
Air Quality Monitoring (1-hr TSP) Results at Long Beach Gardens (ASR8)
May 2008



Contract No. DC/2007/12 - Design and Construction of Tsuen Wan Drainage Tunnel
Air Quality Monitoring (1-hr TSP) Results at Greenview Terrace (ASR9)
May 2008



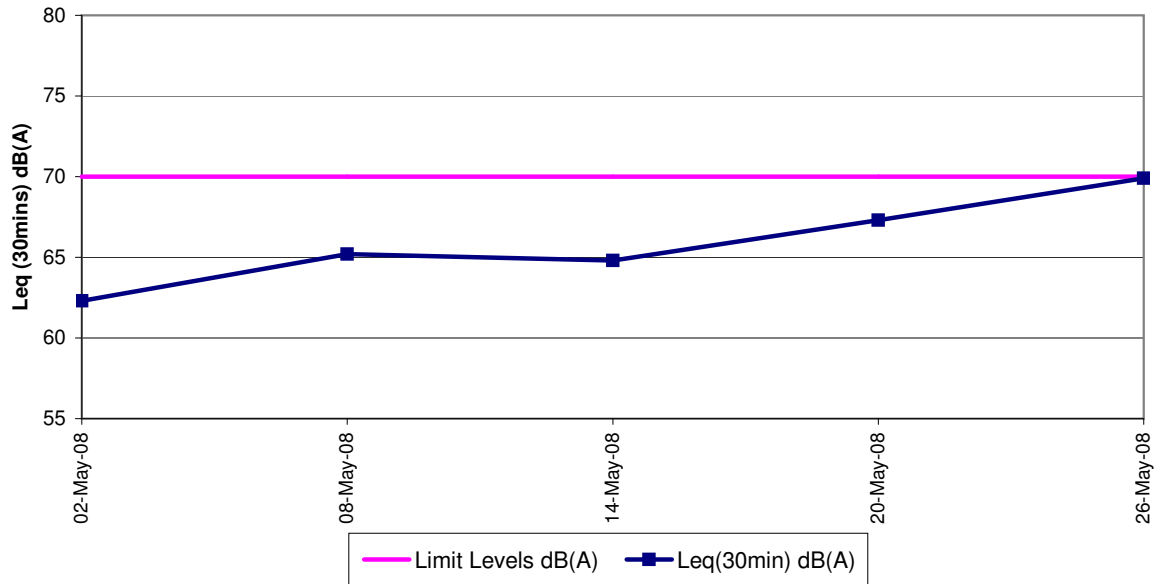
Contract No. DC/2007/12 - Design and Construction of Tsuen Wan Drainage Tunnel

Noise Impact Monitoring Results

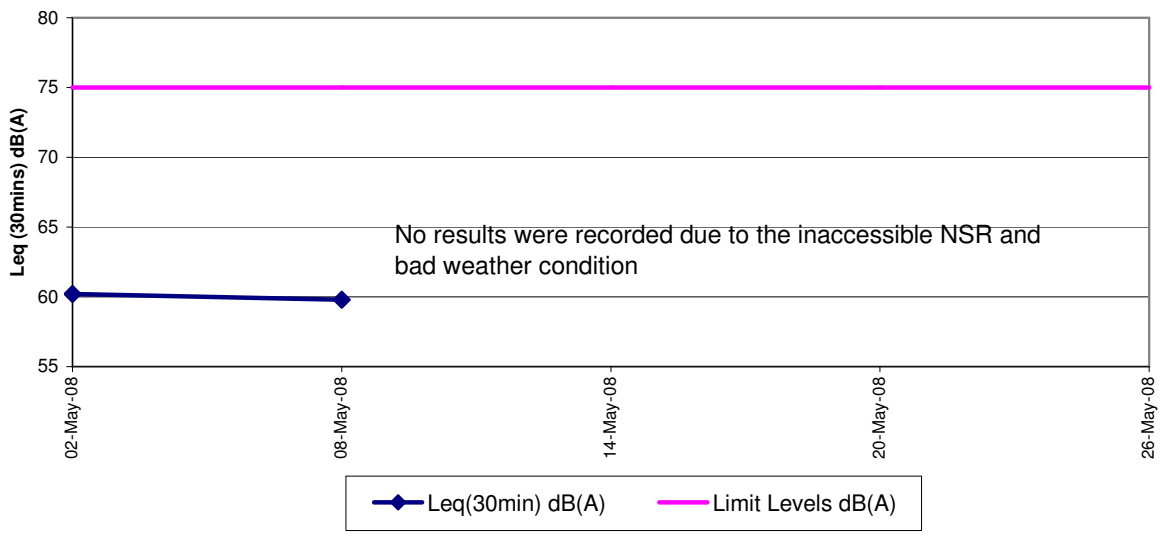
Monitoring Locations	Date	Weather Conditions	Temperature	Wind Speed	Wind	Start Time	End Time	Limit Levels dB(A)	L _{eq(30min)}	L _{10(30min)}	L _{90(30min)}	Observation / Site Condition	Remark	
			(°C)	(m/s)	Direction				dB(A)	dB(A)	dB(A)			
Sik Sik Yuen Ho Fung College NSR 1	02-May-08	Cloudy	26	0.8	E	13:59	14:29	70	62.3	64.0	60.2	Bird and insect noise		
	08-May-08	Cloudy	27	0.7	SW	08:30	09:00		65.2	68.5	63.0	Traffic and human noise		
	14-May-08	Cloudy	27	1	S	08:30	09:00		64.8	67.6	62.3	Traffic noise		
	20-May-08	Cloudy	25	3.3	E	08:30	09:00		67.3	68.9	65.6	Traffic noise		
	26-May-08	Fine	29	1.3	S	09:00	09:30		69.9	72.4	67.5	Bird, insect and human noise		
Hong Hoi Chee Hong Temple NSR 3	02-May-08	Cloudy	26	0.8	E	08:30	09:00	75	60.2	62.5	57.8	N/A		
	08-May-08	Cloudy	27	0.7	SW	08:30	09:00		59.8	61.9	56.8	N/A		
	14-May-08	-	-	1	S	-	-		-	-	-	-	-	No result was recorded as the NSR was inaccessible
	20-May-08	-	-	3.3	E	-	-		-	-	-	-	-	No result was recorded due to the bad weather
	26-May-08	-	-	1.3	S	-	-		-	-	-	-	-	No result was recorded due to the bad weather
Squatters NSR 6	02-May-08	Cloudy	26	0.8	E	13:00	13:30	75	61.8	63.7	58.9	Dog barking		
	08-May-08	Cloudy	27	0.7	SW	13:00	13:30		63.8	65.2	60.9	Dog barking		
	14-May-08	Cloudy	27	1	S	13:00	13:30		62.9	64.3	59.8	Dog barking		
	20-May-08	-	-	3.3	E	-	-		-	-	-	-	-	No result was recorded due to the bad weather
	26-May-08	-	-	1.3	S	-	-		-	-	-	-	-	No result was recorded due to the bad weather
Long Beach Gardens NSR 8	02-May-08	Cloudy	26	0.8	E	17:30	18:00	75	63.6	65.7	61.3	Traffic noise; other site construction activities		
	08-May-08	Cloudy	27	0.7	SW	17:30	18:00		60.7	62.8	57.8	Traffic noise; other site construction activities		
	14-May-08	Cloudy	27	1	S	09:00	09:30		59.5	61.1	57.7	Traffic noise; other site construction activities		
	20-May-08	-	-	3.3	E	-	-		-	-	-	-	-	No result was recorded due to the bad weather
	26-May-08	-	-	1.3	S	-	-		-	-	-	-	-	No result was recorded due to the bad weather
Greenview Terrace NSR 9	02-May-08	Cloudy	26	0.8	E	18:15	18:45	75	65.5	67.6	61.8	Traffic noise; other site construction activities		
	08-May-08	Cloudy	27	0.7	SW	13:00	13:30		66.7	69.7	62.4	Traffic noise; other site construction activities		
	14-May-08	Cloudy	27	1	S	09:40	10:10		63.9	66.7	60.6	Traffic noise; other site construction activities		
	20-May-08	-	-	3.3	E	-	-		-	-	-	-	-	No result was recorded due to the bad weather
	26-May-08	-	-	1.3	S	-	-		-	-	-	-	-	No result was recorded due to the bad weather

Note:
The limit level of NSR1 is 65dB(A) during school examination period.

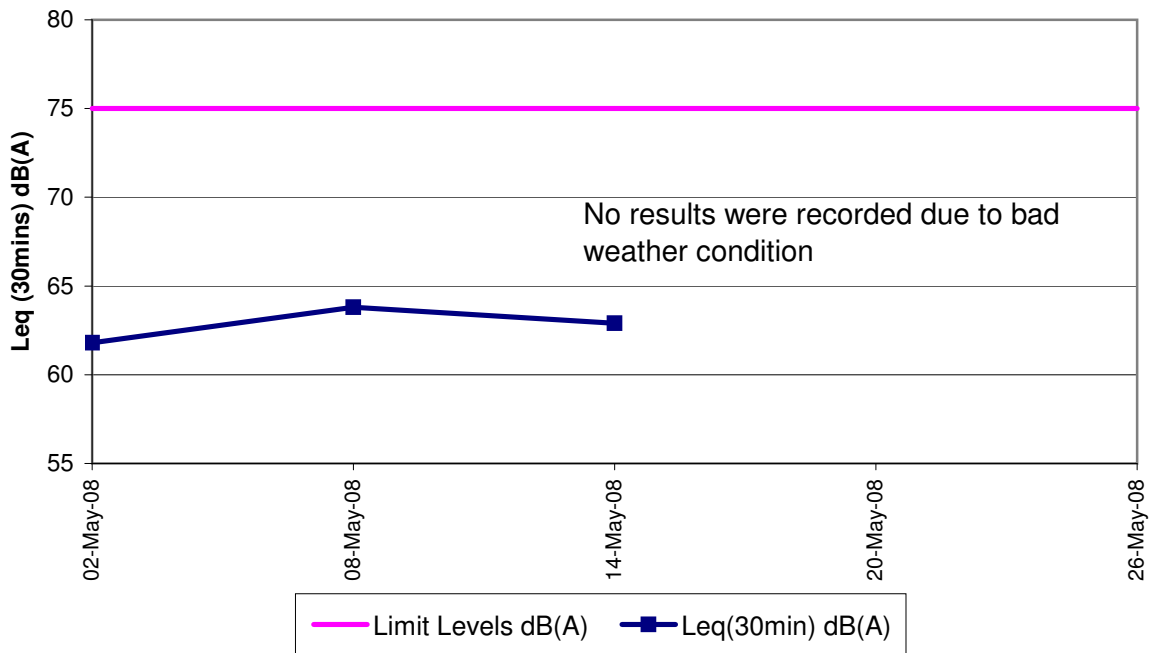
**Contract No. DC/2007/12 - Design and Construction of Tsuen Wan Drainage Tunnel
Noise Monitoring Results at Sik Sik Yuen Ho Fung College (NSR1)
May 2008**



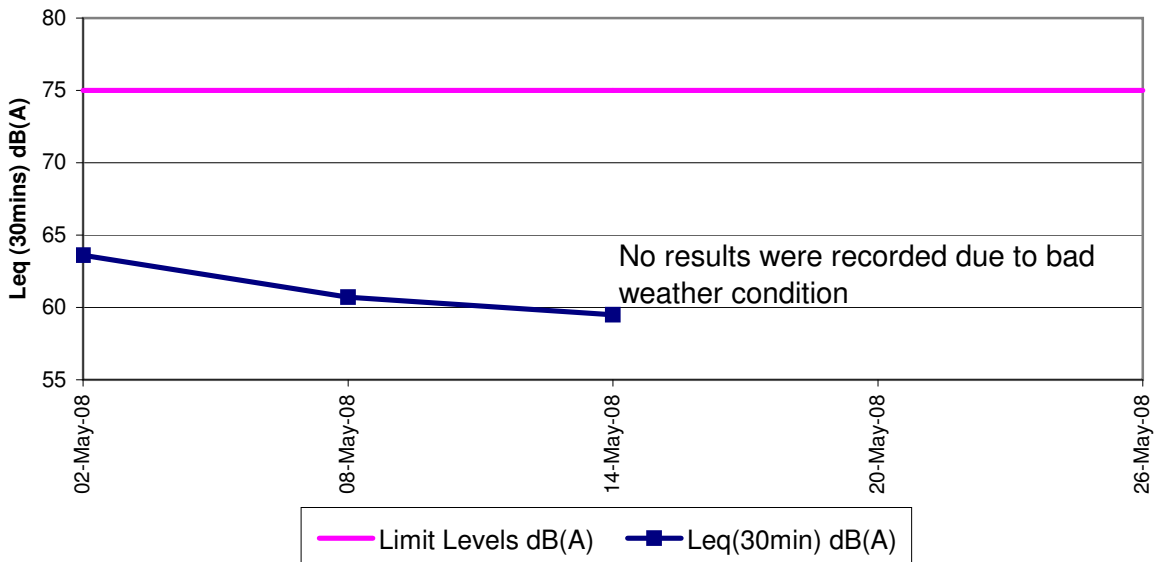
**Contract No. DC/2007/12 - Design and Construction of Tsuen Wan Drainage Tunnel
Noise Monitoring Results at Hong Hoi Chee Hong Temple (NSR3)
May 2008**



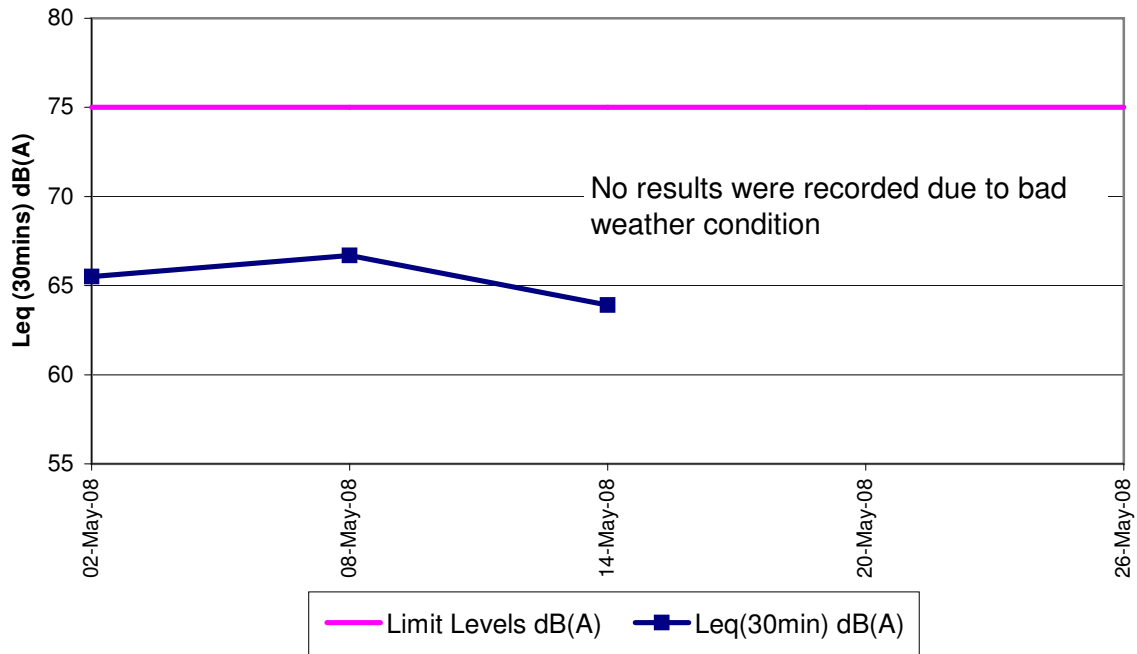
Contract No. DC/2007/12 - Design and Construction of Tsuen Wan Drainage Tunnel
Noise Monitoring Results at Squatters (NSR6)
May 2008



Contract No. DC/2007/12 - Design and Construction of Tsuen Wan Drainage Tunnel
Noise Monitoring Results at Long Beach Gardens (NSR8)
May 2008



Contract No. DC/2007/12 - Design and Construction of Tsuen Wan Drainage Tunnel
Noise Monitoring Results at Greenview Terrace (NSR9)
May 2008

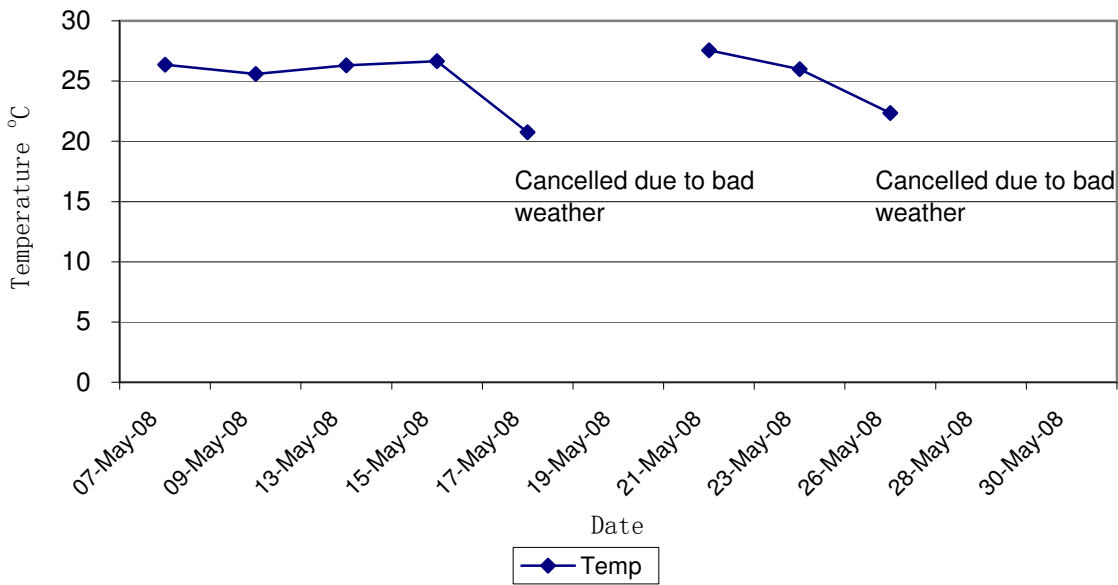


Contract No. DC/2007/12 - Design and Construction of Tsuen Wan Drainage Tunnel

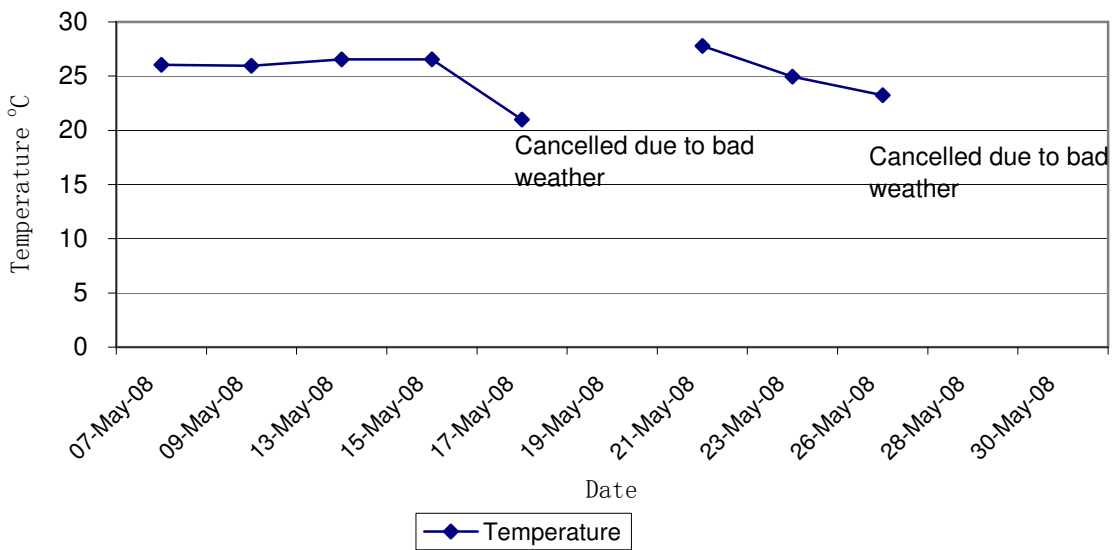
Water Quality Impact Monitoring Results

Monitoring Locations	Date	Start Time	Weather	Water Depth(m)	Temp			DO(mg/L)			Action/Limit Level of DO(mg/L)	pH			Turbidity(NTU)			Action/Limit Level of Tby	SS (mg/L)			Action/Limit Level of SS(mg/L)	Remarks:	
					1	2	Avg	1	2	Avg		1	2	Avg	1	2	Avg		1	2	Avg			
Sik Sik Yuen Ho Fung College I-1	07-May-08	10:45	Sunny	<1	26.40	26.30	26.35	3.66	3.69	3.68	3.42 / 3.34	8.14	8.11	8.13	2.53	2.55	2.54	9.75 / 12.47	1.00	2.00	1.50	8.85 / 10.17	Cancelled due to bad weather condition.	
	09-May-08	14:38	Sunny	<1	25.70	25.50	25.60	3.52	3.49	3.51		8.28	8.25	8.27	4.25	4.21	4.23		2.00	3.00	2.50			
	13-May-08	14:17	Sunny	<1	26.20	26.40	26.30	4.04	4.06	4.05		8.05	8.04	8.05	4.06	4.04	4.05		2.00	1.00	1.50			
	15-May-08	15:04	Sunny	<1	26.50	26.80	26.65	5.64	5.65	5.65		8.04	8.04	8.04	4.02	4.05	4.04		4.00	4.00	4.00			
	17-May-08	08:43	Cloudy	<1	20.60	20.90	20.75	5.81	5.77	5.79		8.02	7.98	8.00	5.62	5.58	5.60		7.00	7.00	7.00			
	19-May-08																							
	21-May-08	13:04	Fine	<1	27.40	27.70	27.55	5.32	5.43	5.38		7.21	7.35	7.28	8.62	8.33	8.48		1.00	2.00	1.50			
	23-May-08	08:33	Sunny	<1	26.20	25.80	26.00	6.13	6.02	6.08		7.93	8.02	7.98	7.21	6.93	7.07		8.00	8.00	8.00			
	26-May-08	08:26	Cloudy	<1	22.60	22.10	22.35	5.73	5.68	5.71		7.93	8.01	7.97	4.97	4.76	4.87		5.00	5.00	5.00			
	28-May-08																							
	30-May-08																							Cancelled due to bad weather condition.
	Sik Sik Yuen Ho Fung College I-1-C	07-May-08	10:11	Sunny	<1	26.10	26.00	26.05	3.47	3.48		3.48	3.76 / 3.71	8.02	8.02	8.02	2.51		2.50	2.51	10.88 / 12.95		1.00	1.00
09-May-08		14:15	Sunny	<1	26.10	25.80	25.95	3.97	3.99	3.98	8.12	8.11		8.12	4.92	4.99	4.96	5.00	7.00	6.00				
13-May-08		14:09	Sunny	<1	26.70	26.40	26.55	3.89	3.86	3.88	8.10	8.12		8.11	3.82	3.80	3.81	2.00	1.00	1.50				
15-May-08		15:37	Sunny	<1	26.40	26.70	26.55	6.02	6.04	6.03	7.98	7.97		7.98	3.62	3.66	3.64	4.00	3.00	3.50				
17-May-08		09:14	Cloudy	<1	21.20	20.80	21.00	5.92	5.84	5.88	7.91	7.88		7.90	5.74	5.66	5.70	5.00	4.00	4.50				
19-May-08																								
21-May-08		13:39	Fine	<1	28.10	27.50	27.80	5.43	5.80	5.62	7.76	7.67		7.72	7.91	8.11	8.01	2.00	2.00	2.00				
23-May-08		08:57	Sunny	<1	25.20	24.70	24.95	5.92	5.88	5.90	7.72	7.67		7.70	7.31	7.09	7.20	7.00	8.00	7.50				
26-May-08		09:07	Cloudy	<1	23.60	22.90	23.25	5.78	5.71	5.75	7.88	7.91		7.90	5.03	5.09	5.06	9.00	17.00	13.00				
28-May-08																								
30-May-08																							Cancelled due to bad weather condition.	
Hong Hoi Chee Hong Temple I-2		07-May-08	09:39	Sunny	<1	25.90	26.10	26.00	4.84	4.83	4.84	3.66 / 3.63		7.95	7.97	7.96	2.79	2.81	2.80	6.63 / 6.99		1.00	1.00	1.00
	09-May-08	15:31	Sunny	<1	25.20	25.40	25.30	4.19	4.22	4.21	8.04		8.07	8.06	2.98	2.99	2.99	3.00	2.00		2.50			
	13-May-08	15:20	Sunny	<1	26.70	26.60	26.65	4.39	4.35	4.37	7.95		7.97	7.96	3.17	3.20	3.19	2.00	1.00		1.50			
	15-May-08	16:17	Sunny	<1	25.70	25.80	25.75	5.26	5.28	5.27	7.97		7.97	7.97	3.69	3.71	3.70	2.00	1.00		1.50			
	17-May-08	10:10	Cloudy	<1	19.80	20.10	19.95	6.21	6.30	6.26	7.48		7.55	7.52	4.37	4.44	4.41	3.00	4.00		3.50			
	19-May-08																							
	21-May-08	14:11	Fine	<1	26.90	27.20	27.05	4.72	4.41	4.57	7.92		7.87	7.90	6.14	5.82	5.98	1.00	2.00		1.50			
	23-May-08	09:36	Sunny	<1	24.80	25.30	25.05	6.97	6.90	6.94	7.83		7.76	7.80	3.12	3.06	3.09	3.00	3.00		3.00			
	26-May-08	10:13	Cloudy	<1	23.30	22.70	23.00	5.13	4.79	4.96	7.89		7.92	7.91	4.79	4.73	4.76	6.00	2.00		4.00			
	28-May-08																							
	30-May-08																						Cancelled due to bad weather condition.	
	Hong Hoi Chee Hong Temple I-2-C	07-May-08	09:12	Sunny	<1	25.60	25.70	25.65	5.14	5.12	5.13		3.83 / 3.67	7.86	7.86	7.86	2.58	2.60	2.59		6.73 / 8.27	1.00	1.00	1.00
09-May-08		15:09	Sunny	<1	24.90	25.20	25.05	3.26	3.33	3.30	7.95	7.98		7.97	3.28	3.32	3.30	2.00	3.00	2.50				
13-May-08		15:04	Sunny	<1	26.20	26.40	26.30	4.43	4.41	4.42	8.02	7.99		8.01	2.46	2.44	2.45	2.00	2.00	2.00				
15-May-08		16:05	Sunny	<1	25.10	25.40	25.25	5.63	5.65	5.64	7.94	7.91		7.93	3.17	3.19	3.18	2.00	1.00	1.50				
17-May-08		10:39	Cloudy	<1	20.10	19.70	19.90	6.33	6.39	6.36	7.63	7.67		7.65	4.67	4.59	4.63	4.00	3.00	3.50				
19-May-08																								
21-May-08		14:33	Fine	<1	25.60	25.80	25.70	4.89	4.61	4.75	7.88	7.91		7.90	5.92	5.61	5.77	1.00	1.00	1.00				
23-May-08		10:01	Sunny	<1	25.10	24.80	24.95	7.11	7.26	7.19	7.16	7.53		7.35	3.16	3.06	3.11	1.00	1.00	1.00				
26-May-08		10:40	Cloudy	<1	22.60	22.90	22.75	4.98	4.91	4.95	7.88	7.96		7.92	4.81	4.77	4.79	2.00	1.00	1.50				
28-May-08																								
30-May-08																							Cancelled due to bad weather condition.	
Squatters I-3		07-May-08	12:18	Sunny	<1	25.70	25.80	25.75	4.85	4.86	4.86	3.65 / 3.51		7.91	7.91	7.91	2.41	2.40	2.41	3.99 / 4.18		2.00	2.00	2.00
	09-May-08	17:11	Sunny	<1	25.20	25.40	25.30	4.89	4.87	4.88	8.05		8.04	8.05	2.05	2.04	2.05	2.00	1.00		1.50			
	13-May-08	17:02	Sunny	<1	26.20	26.30	26.25	4.78	4.81	4.80	7.96		7.98	7.97	2.08	2.10	2.09	1.00	1.00		1.00			
	15-May-08	18:04	Sunny	<1	25.90	26.00	25.95	6.24	6.24	6.24	8.04		8.02	8.03	1.89	1.92	1.91	1.00	1.00		1.00			
	17-May-08	12:12	Cloudy	<1	19.30	20.10	19.70	7.61	7.59	7.60	7.88		7.93	7.91	3.10	2.97	3.04	2.00	2.00		2.00			
	19-May-08																							
	21-May-08	16:07	Fine	<1	24.80	25.20	25.00	6.33	6.47	6.40	7.78		7.72	7.75	3.21	3.11	3.16	1.00	1.00		1.00			
	23-May-08	11:37	Sunny	<1	20.30	20.60	20.45	6.78	6.71	6.75	7.62		7.58	7.60	1.69	1.72	1.71	1.00	1.00		1.00			
	26-May-08	14:03	Cloudy	<1	20.10	19.80	19.95	5.11	4.98	5.05	7.93		7.89	7.91	2.97	3.01	2.99	15.00	4.00		9.50			
	28-May-08																							
	30-May-08																						Cancelled due to bad weather condition.	
	Squatters I-3-C	07-May-08	11:47	Sunny	<1	25.40	25.30	25.35	4.38	4.39	4.39		3.63 / 3.62	7.86	7.85	7.86	2.19	2.21	2.20		4.28 / 5.06	2.00	2.00	2.00
09-May-08		16:45	Sunny	<1	25.70	25.60	25.65	4.28	4.31	4.30	8.12	8.09		8.11	1.82	1.80	1.81	1.00	1.00	1.00				
13-May-08		16:30	Sunny	<1	26.00	25.80	25.90	4.55	4.55	4.55	7.91	7.93		7.92	1.92	1.95	1.94	1.00	1.00	1.00				
15-May-08		17:43	Sunny	<1	26.30	26.50	26.40	5.87	5.85	5.86	8.12	8.09		8.11	2.18	2.17	2.18	1.00	1.00	1.00				
17-May-08		12:48	Cloudy	<1	19.60	19.10	19.35	6.78	6.83	6.81	7.92	7.99		7.96	2.79	2.83	2.81	1.00	1.00	1.00				
19-May-08																								
21-May-08		16:37	Fine	<1	27.10	26.70	26.90	6.52	6.41	6.47	7.91	7.86		7.89	3.02	2.72	2.87	1.00	2.00	1.50				
23-May-08		12:16	Sunny	<1	20.30	21.60	20.95	7.11	6.96	7.04	7.58	7.63		7.61	1.73	1.70	1.72	1.00	1.00	1.00				
26-May-08		14:37	Cloudy	<1	19.80	20.10	19.95	4.96																

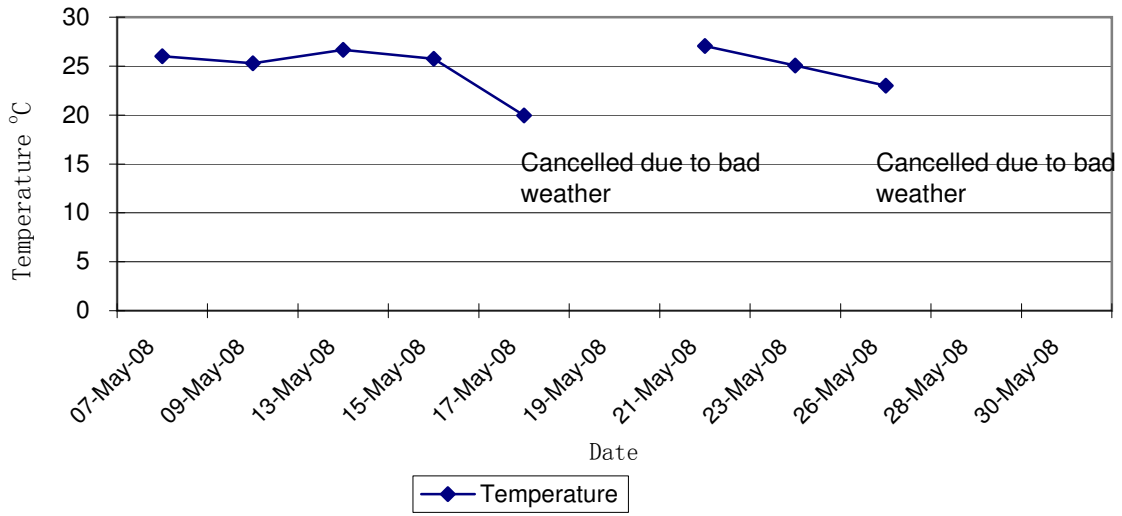
Contract No. DC/2007/12 - Design and Construction of Tsuen Wan Drainage Tunnel
 Water Quality Results at Sik Sik Yuen Ho Fung College (I-1)
 May 2008



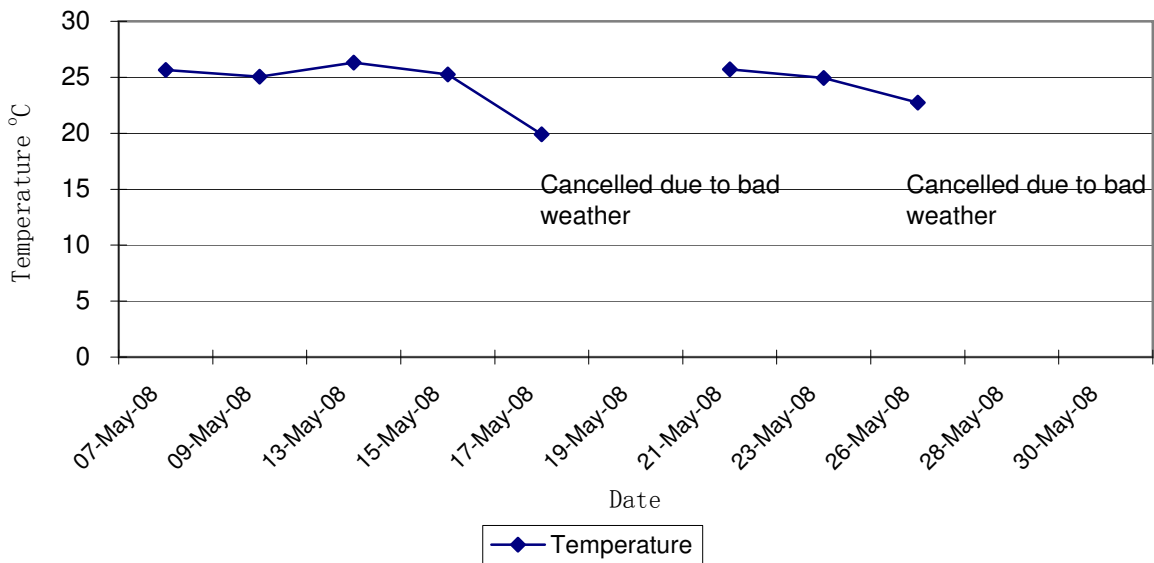
Contract No. DC/2007/12 - Design and Construction of Tsuen Wan Drainage Tunnel
 Water Quality Results at Sik Sik Yuen Ho Fung College (I-1-C)
 May 2008



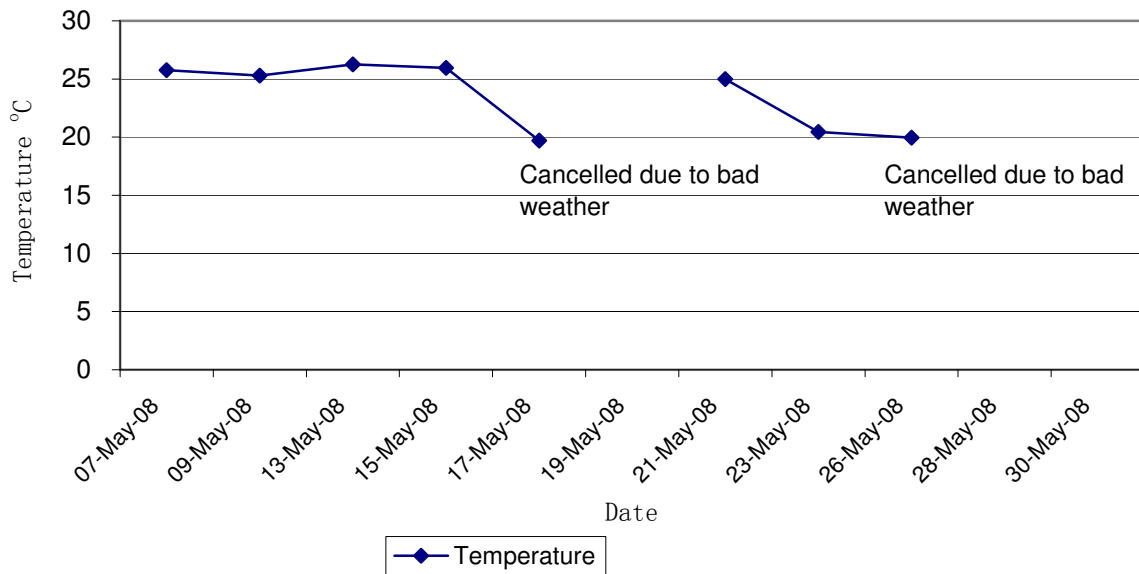
Contract No. DC/2007/12 - Design and Construction of Tsuen Wan Drainage Tunnel
Water Quality Results at Hong Hoi Chee Hong Temple (I-2)
May 2008



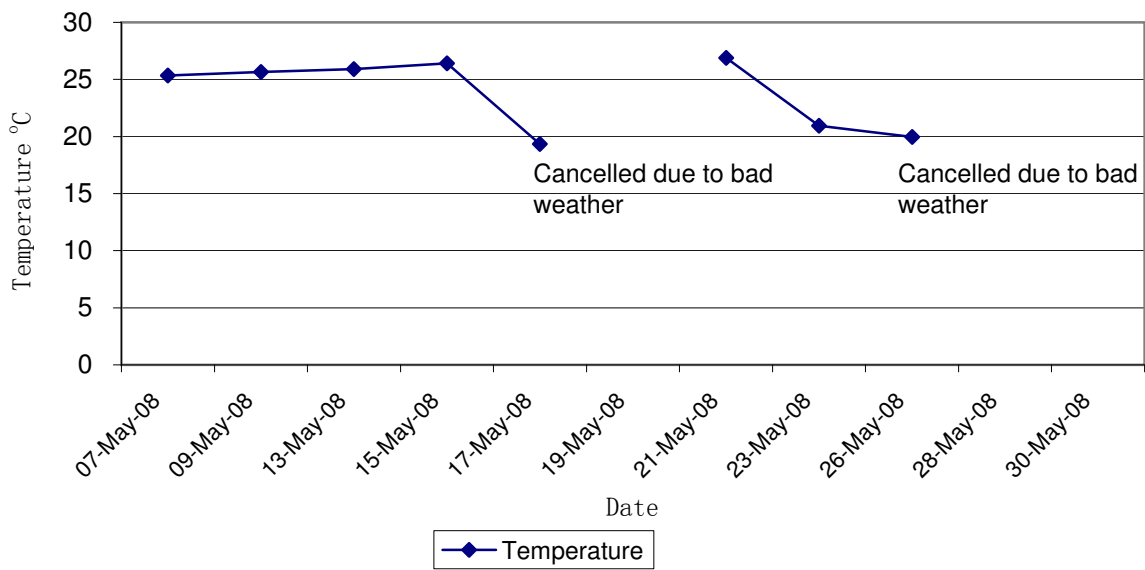
Contract No. DC/2007/12 - Design and Construction of Tsuen Wan Drainage Tunnel
Water Quality Results at Hong Hoi Chee Hong Temple (I-2-C)
May 2008



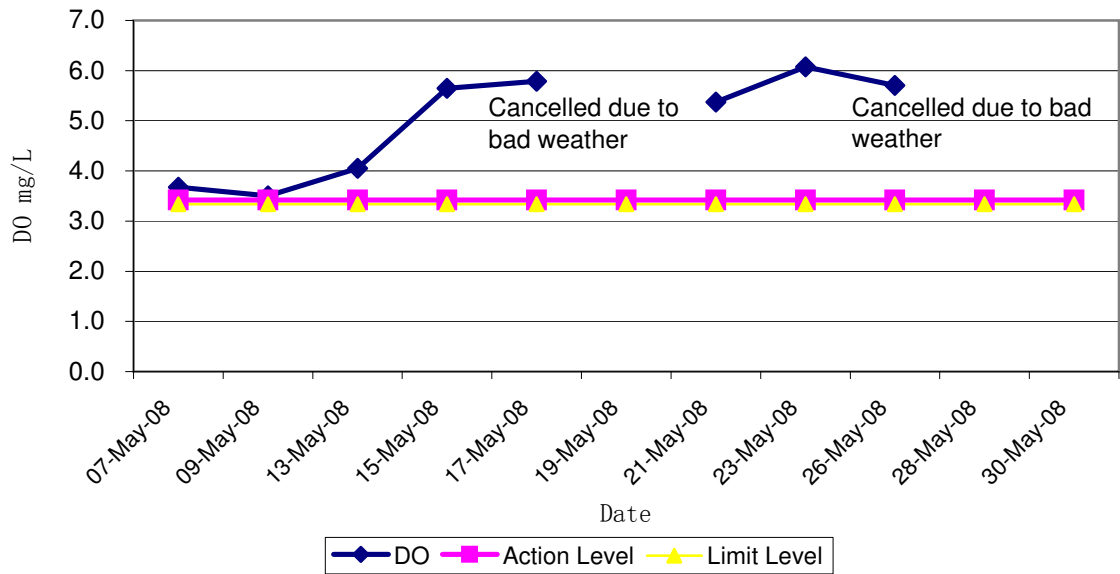
Contract No. DC/2007/12 - Design and Construction of Tsuen Wan Drainage Tunnel
Water Quality Results at Squatters (I-3)
May 2008



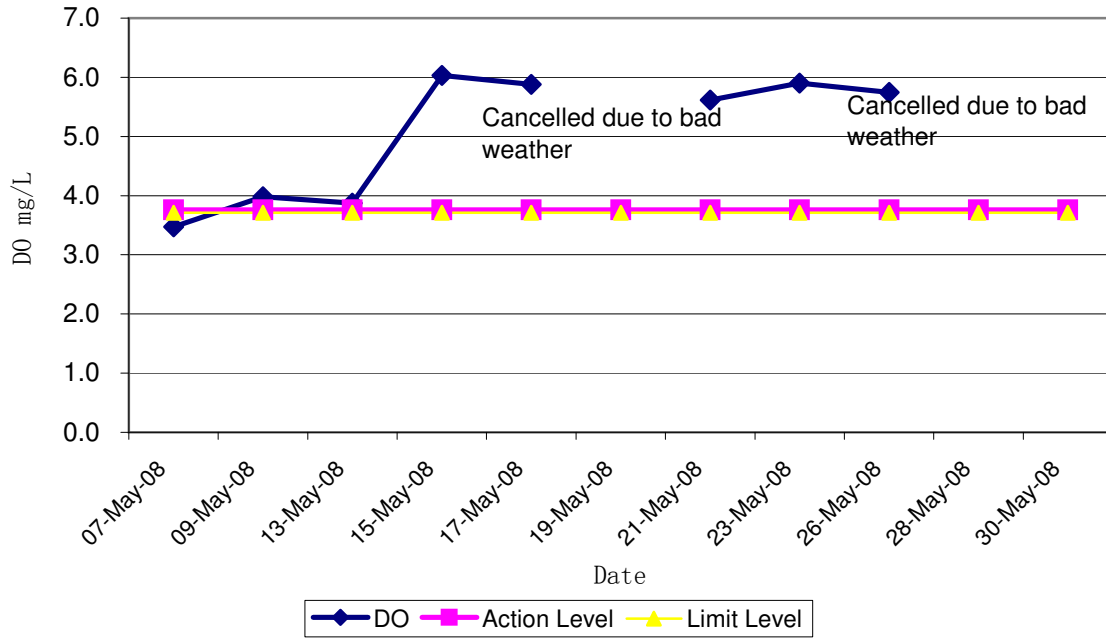
Contract No. DC/2007/12 - Design and Construction of Tsuen Wan Drainage Tunnel
Water Quality Results at Squatters (I-3-C)
May 2008



Contract No. DC/2007/12 - Design and Construction of Tsuen Wan Drainage Tunnel
 Water Quality Results at Sik Sik Yuen Ho Fung College (I-1)
 May 2008

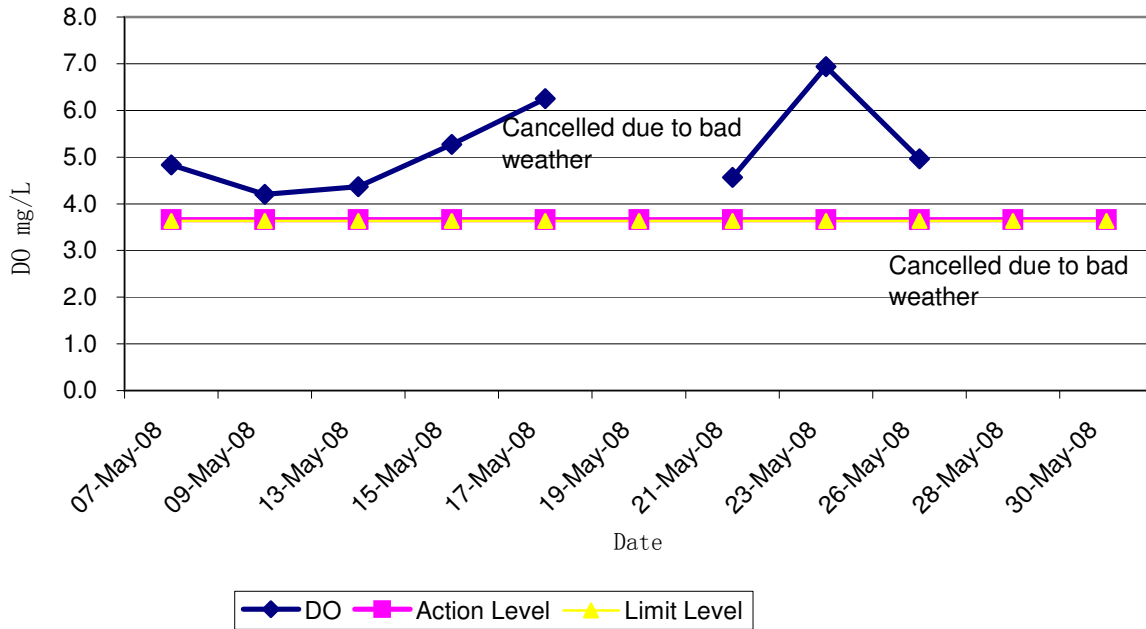


Contract No. DC/2007/12 - Design and Construction of Tsuen Wan Drainage Tunnel
 Water Quality Results at Sik Sik Yuen Ho Fung College (I-1-C)
 May 2008

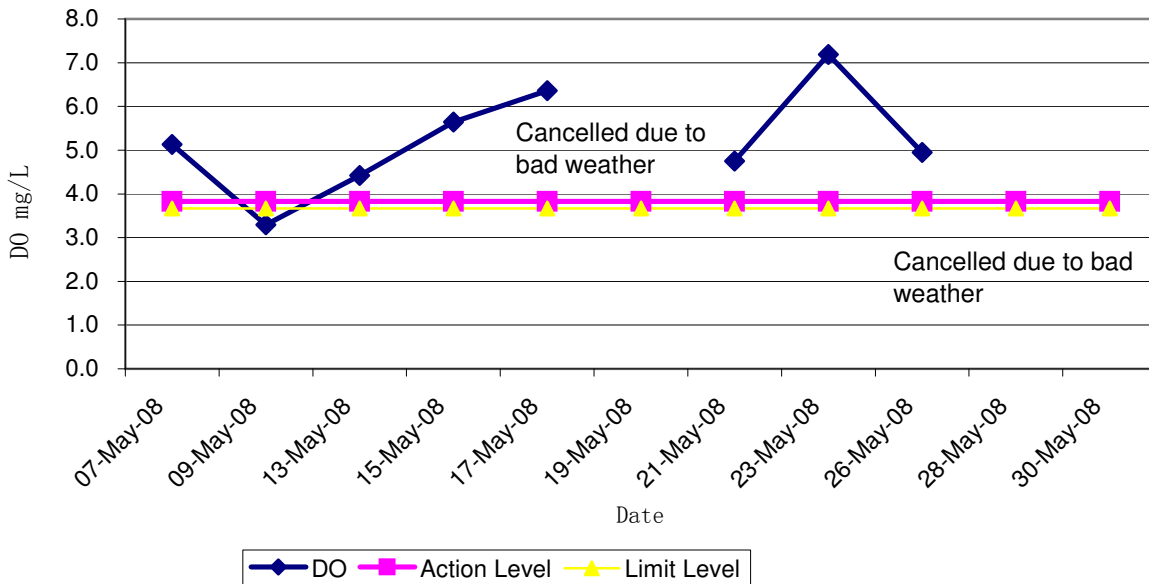


Note: Exceedances of Action / Limit Levels occur when the levels of DO are below the respective limit levels.

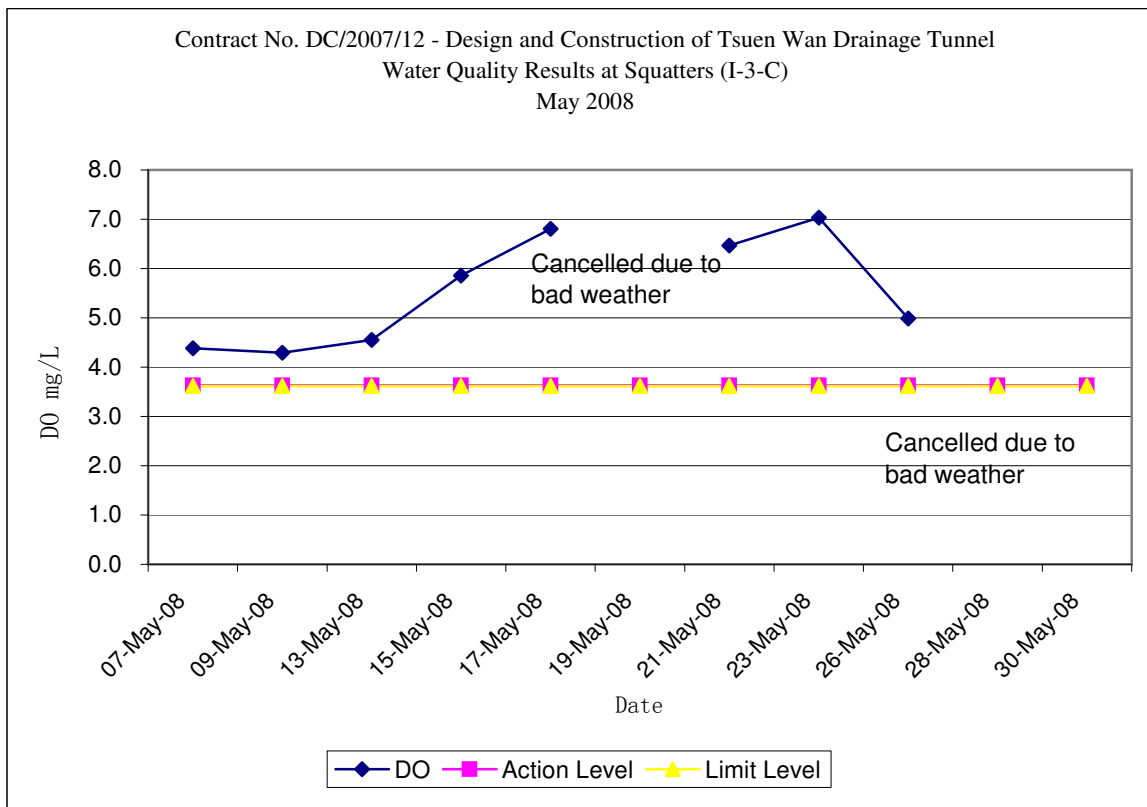
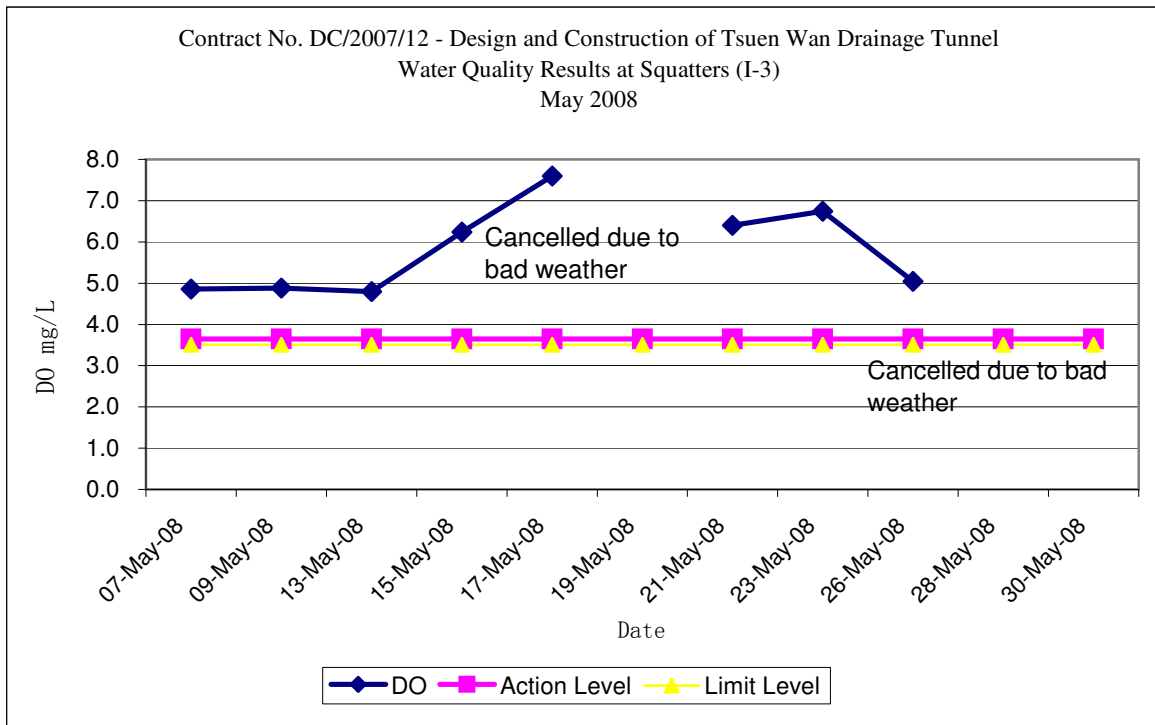
Contract No. DC/2007/12 - Design and Construction of Tsuen Wan Drainage Tunnel
 Water Quality Results at Hong Hoi Chee Jong Temple (I-2)
 May 2008



Contract No. DC/2007/12 - Design and Construction of Tsuen Wan Drainage Tunnel
 Water Quality Results at Hong Hoi Chee Jong Temple (I-2-C)
 May 2008

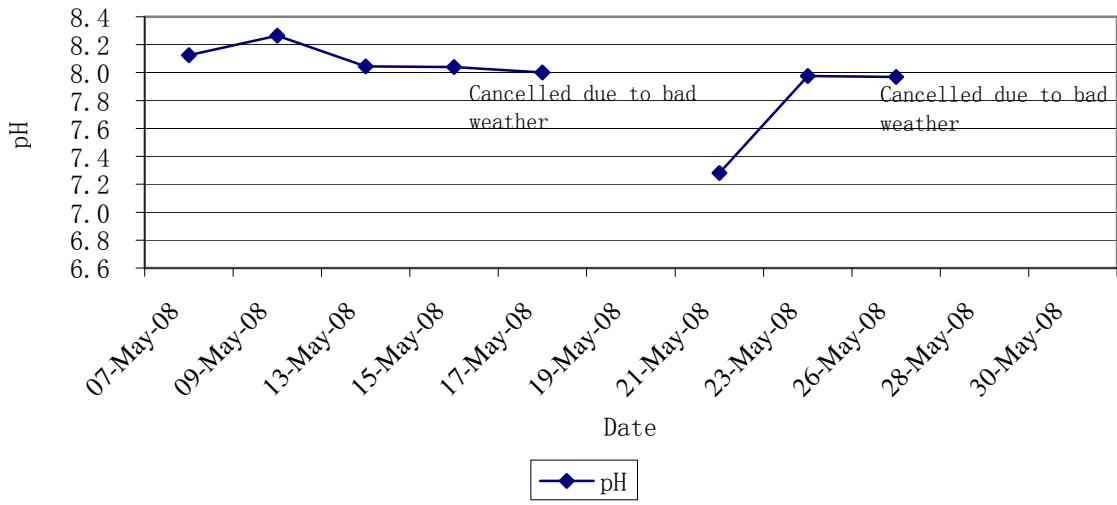


Note: Exceedances of Action / Limit Levels occur when the levels of DO are below the respective limit levels.

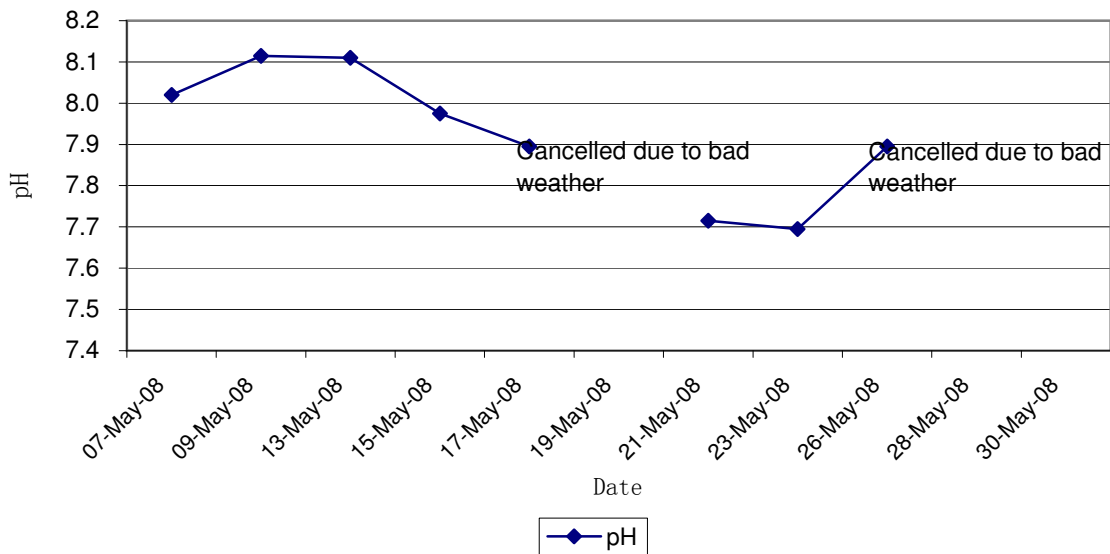


Note: Exceedances of Action / Limit Levels occur when the levels of DO are below the respective limit levels.

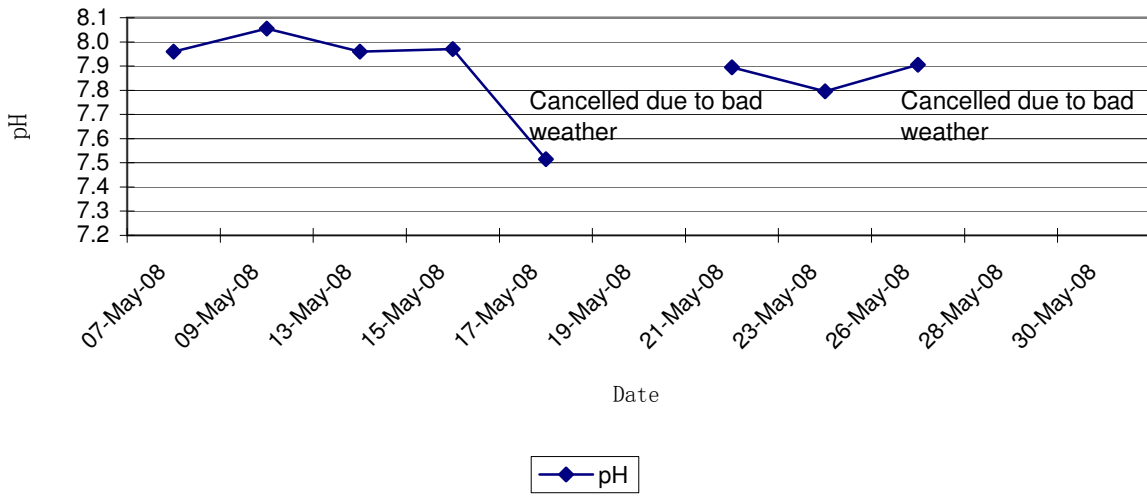
Contract No. DC/2007/12 - Design and Construction of Tsuen Wan Drainage Tunnel
 Water Quality Results at Sik Sik Yuen Ho Fung College (I-1)
 May 2008



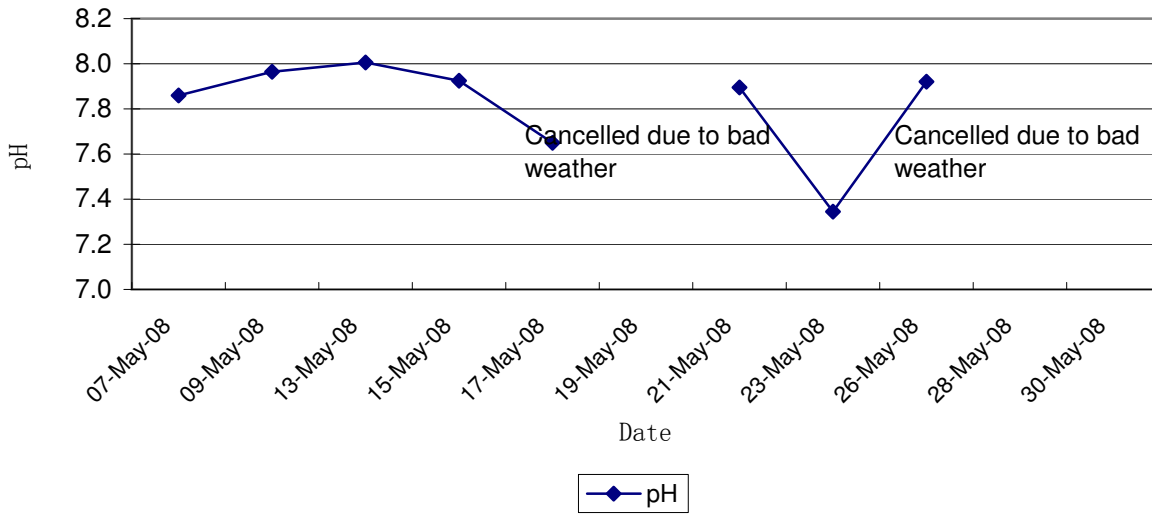
Contract No. DC/2007/12 - Design and Construction of Tsuen Wan Drainage Tunnel
 Water Quality Results at Sik Sik Yuen Ho Fung College (I-1-C)
 May 2008



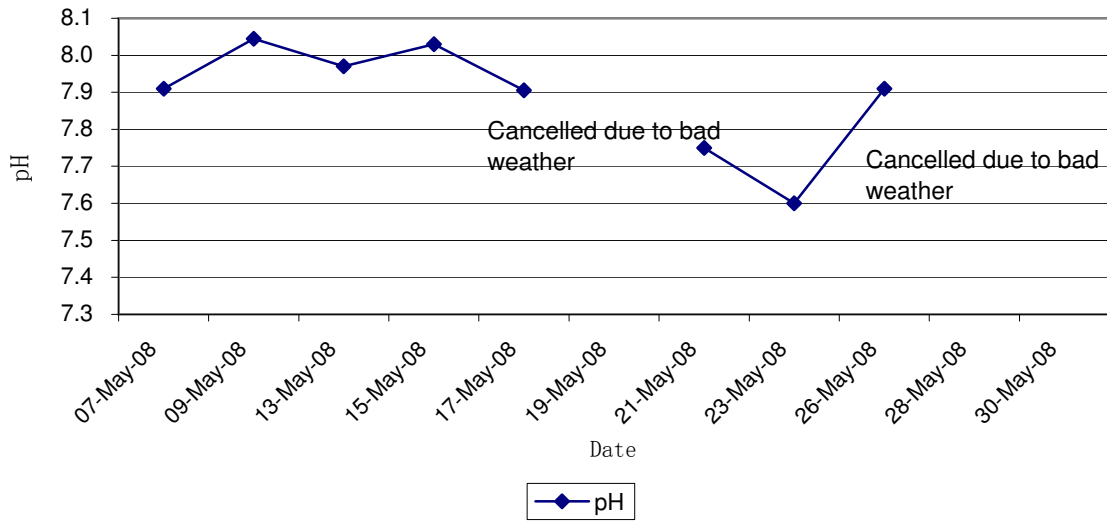
Contract No. DC/2007/12 - Design and Construction of Tsuen Wan Drainage Tunnel
Water Quality Results at Hong Hoi Chee Hong Temple (I-2)
May 2008



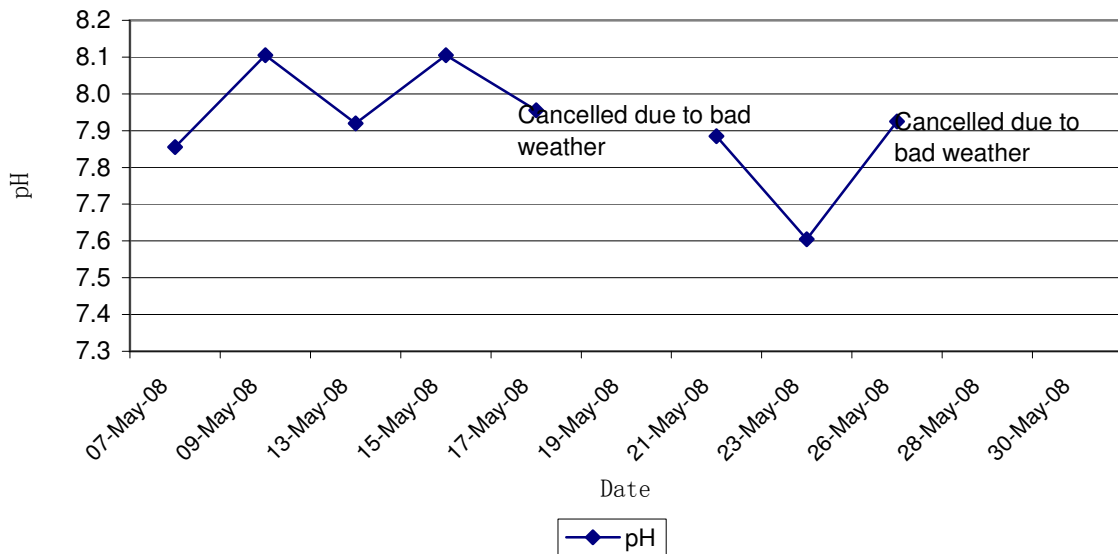
Contract No. DC/2007/12 - Design and Construction of Tsuen Wan Drainage Tunnel
Water Quality Results at Hong Hoi Chee Hong Temple (I-2-C)
May 2008



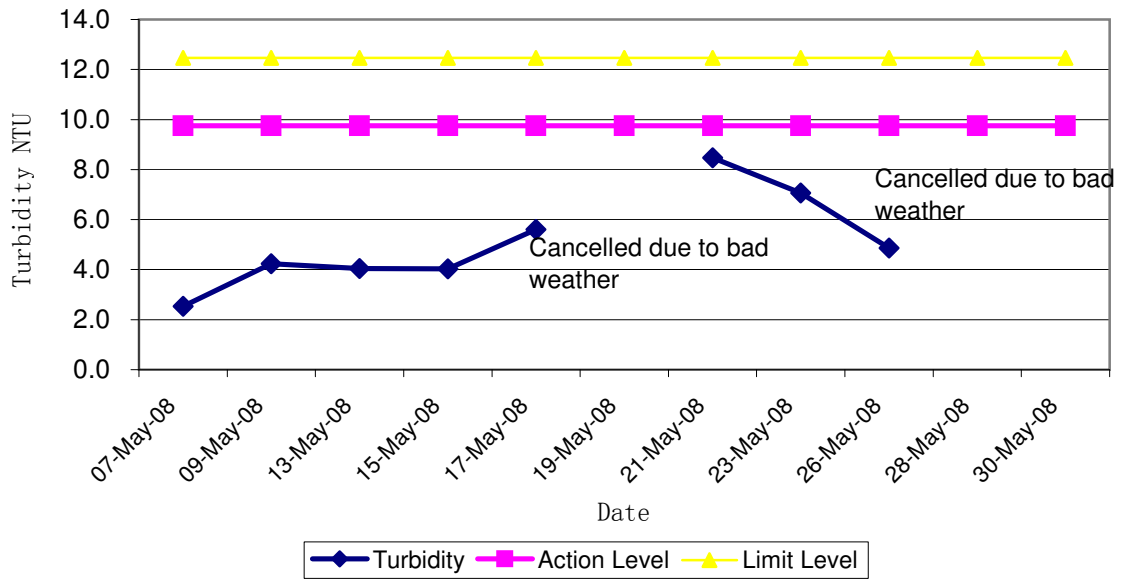
Contract No. DC/2007/12 - Design and Construction of Tsuen Wan Drainage Tunnel
Water Quality Results at Squatters (I-3)
May 2008



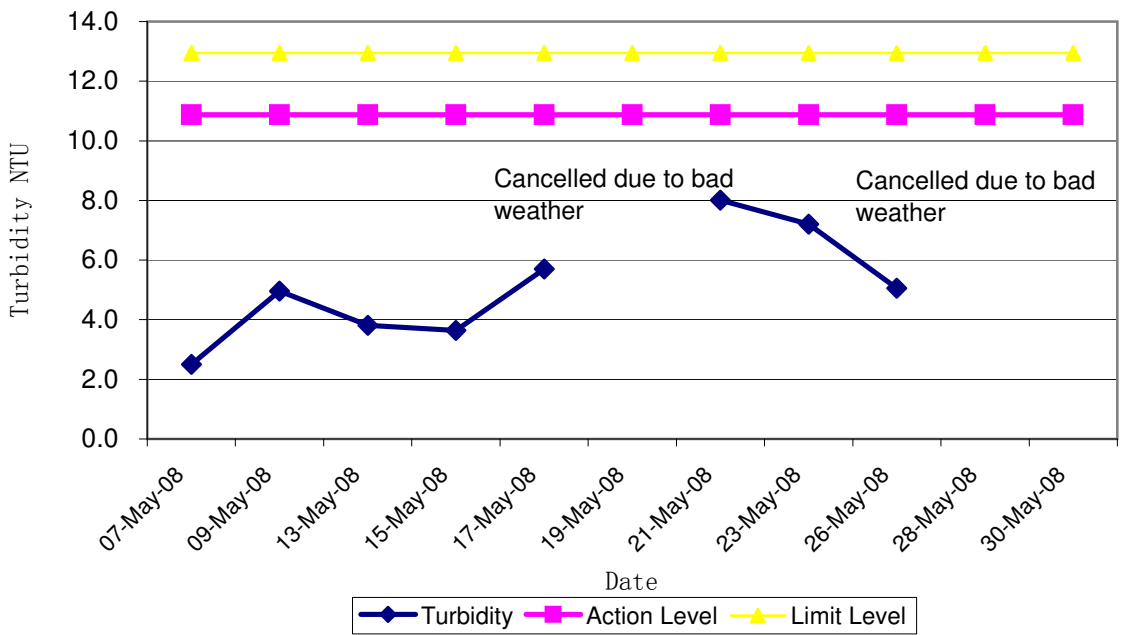
Contract No. DC/2007/12 - Design and Construction of Tsuen Wan Drainage Tunnel
Water Quality Results at Squatters (I-3-C)
May 2008



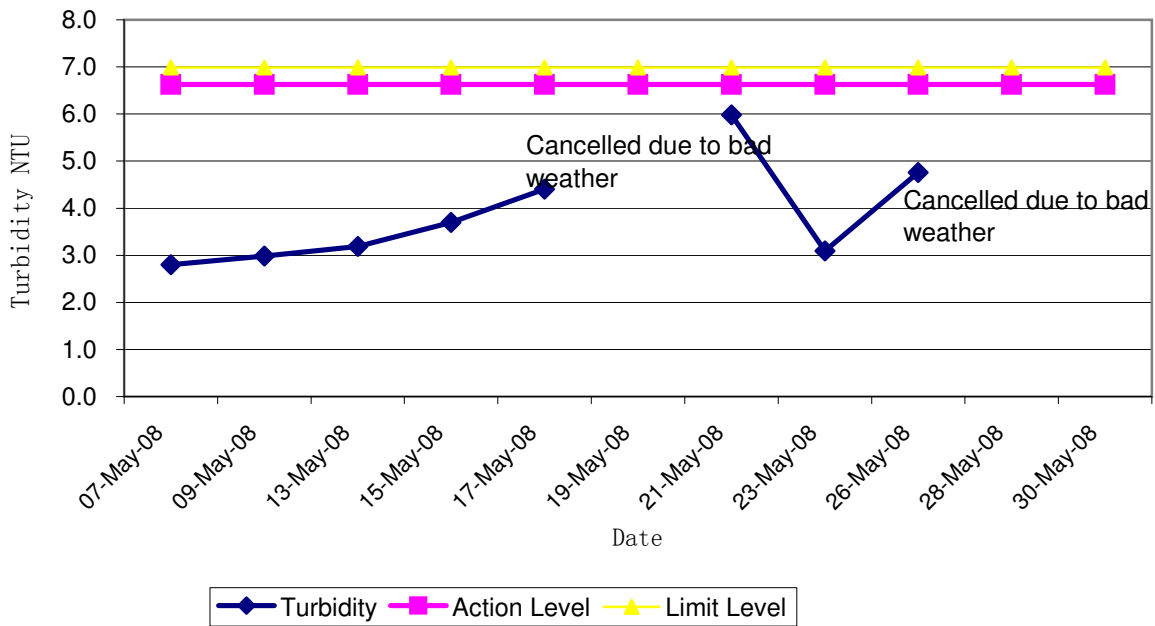
Contract No. DC/2007/12 - Design and Construction of Tsuen Wan Drainage Tunnel
 Quality Results at Sik Sik Yuen Ho Fung College (I-1)
 May 2008



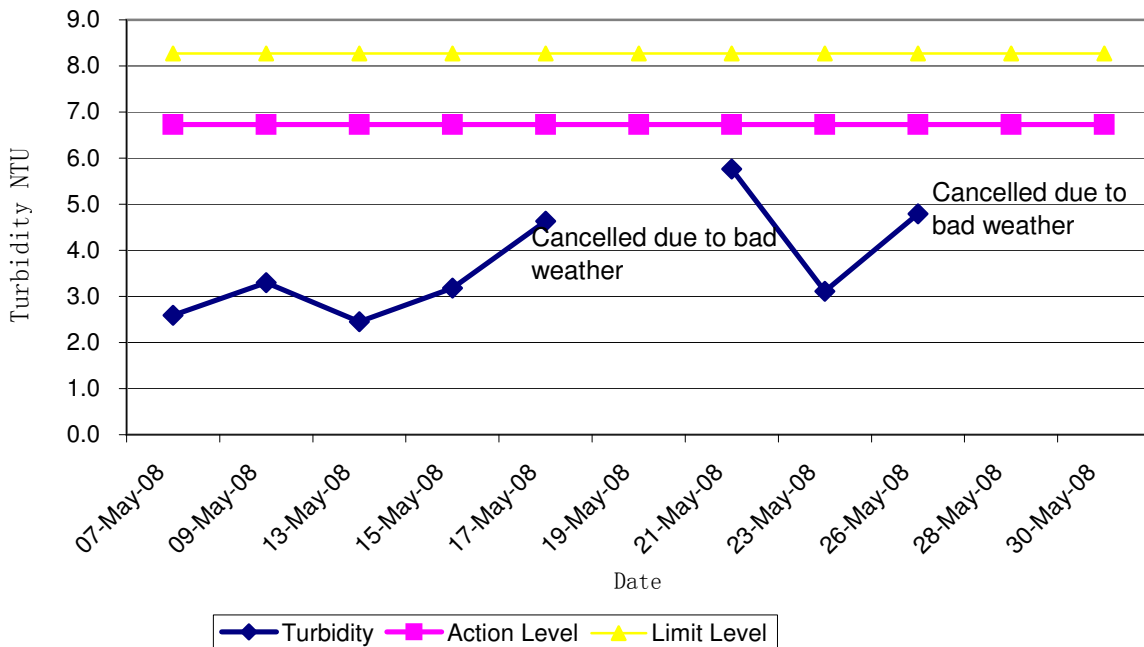
Contract No. DC/2007/12 - Design and Construction of Tsuen Wan Drainage Tunnel
 Water Quality Results at Sik Sik Yuen Ho Fung College (I-1-C)
 May 2008



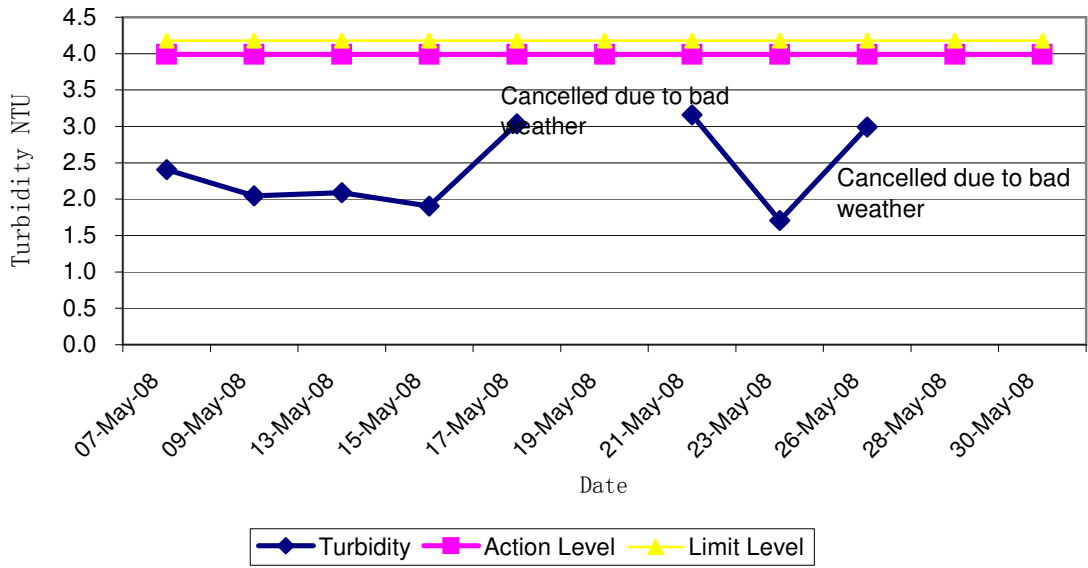
Contract No. DC/2007/12 - Design and Construction of Tsuen Wan Drainage Tunnel
 Water Quality Results at Hong Hoi Chee Jong Temple (I-2)
 May 2008



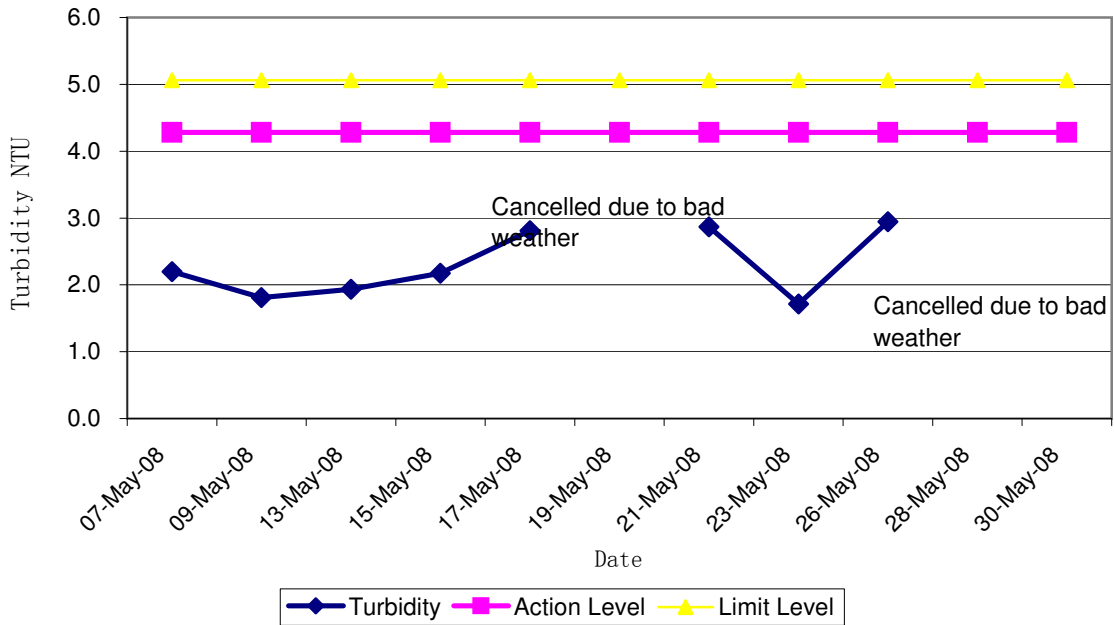
Contract No. DC/2007/12 - Design and Construction of Tsuen Wan Drainage Tunnel
 Water Quality Results at Hong Hoi Chee Jong Temple (I-2-C)
 May 2008



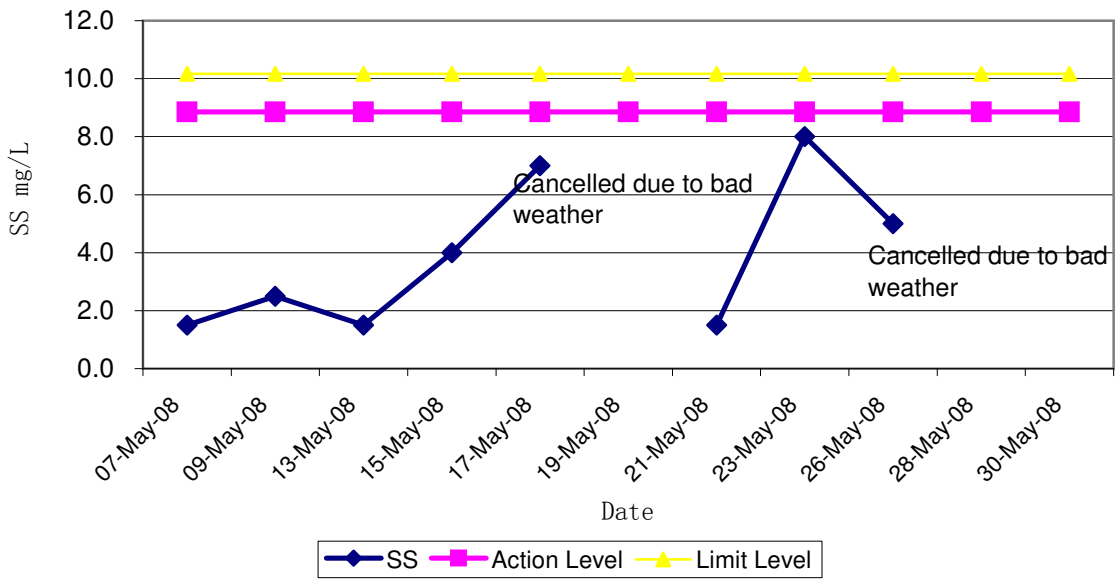
Contract No. DC/2007/12 - Design and Construction of Tsuen Wan Drainage Tunnel
 Water Quality Results at Squatters (I-3)
 May 2008



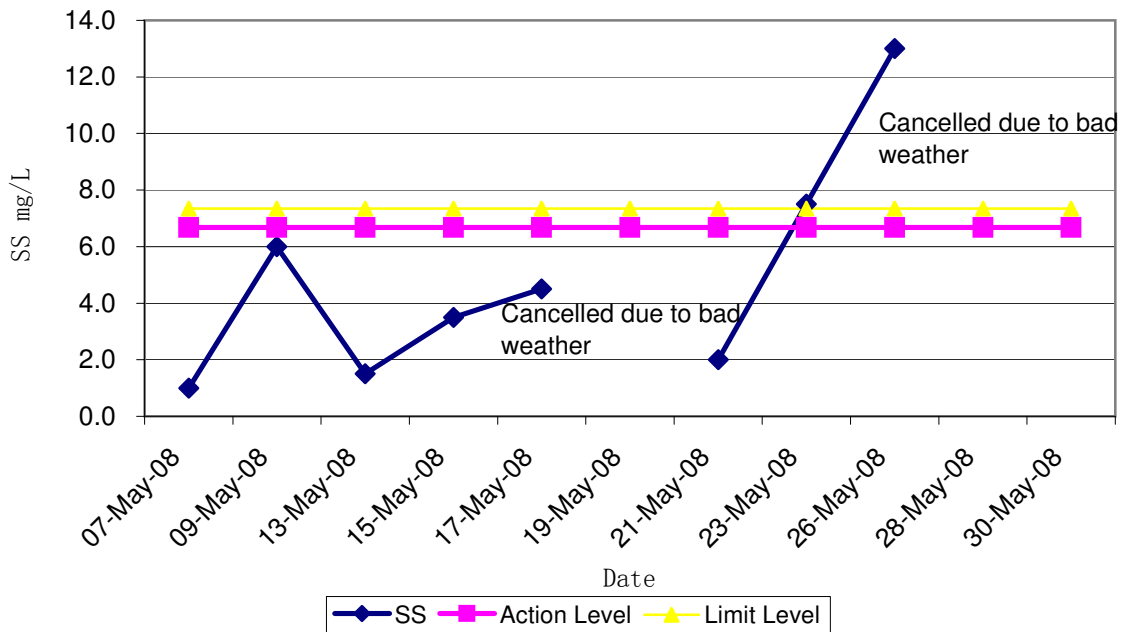
Contract No. DC/2007/12 - Design and Construction of Tsuen Wan Drainage Tunnel
 Water Quality Results at Squatters (I-3-C)
 May 2008



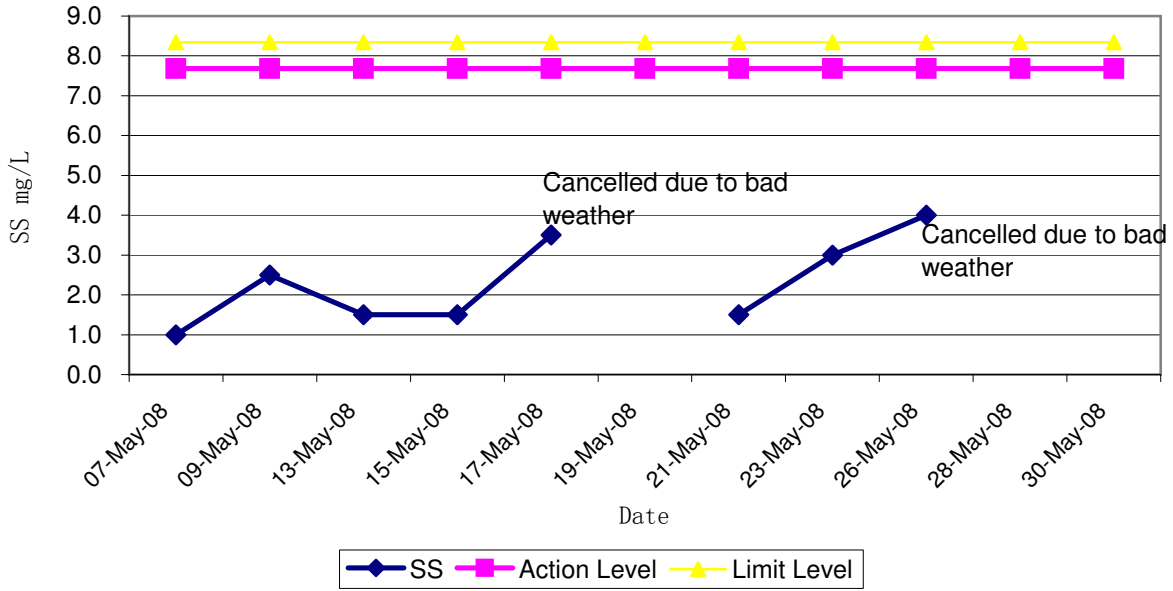
Contract No. DC/2007/12 - Design and Construction of Tsuen Wan Drainage Tunnel
 Water Quality Results at Sik Sik Yuen Ho Fung College (I-1)
 May 2008



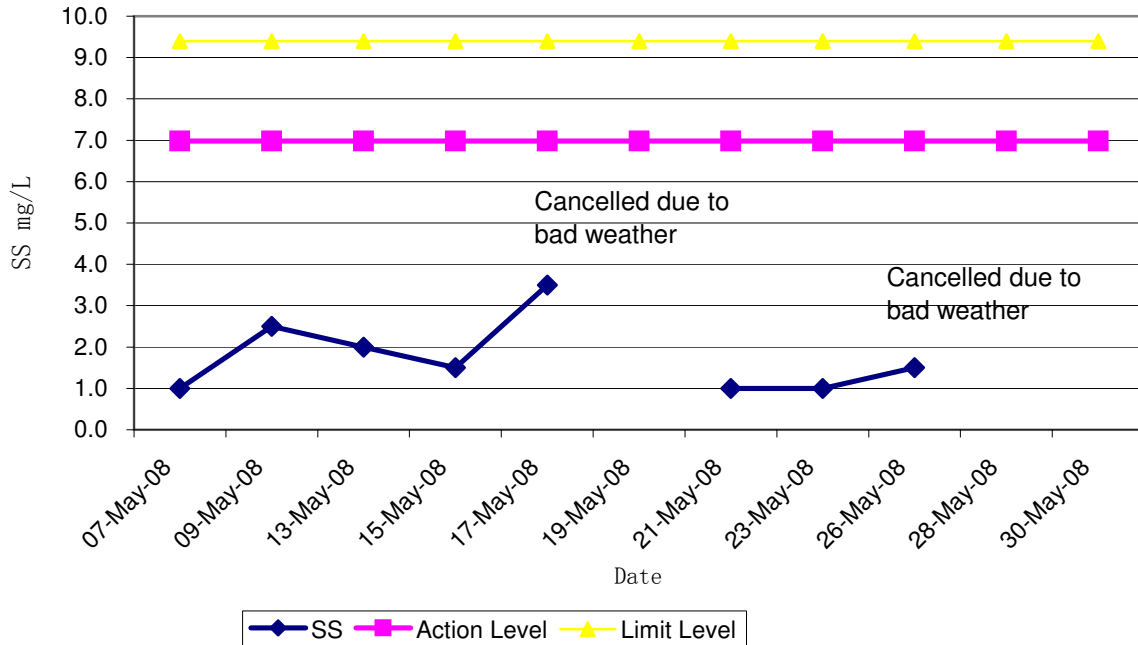
Contract No. DC/2007/12 - Design and Construction of Tsuen Wan Drainage Tunnel
 Water Quality Results at Sik Sik Yuen Ho Fung College (I-1-C)
 May 2008



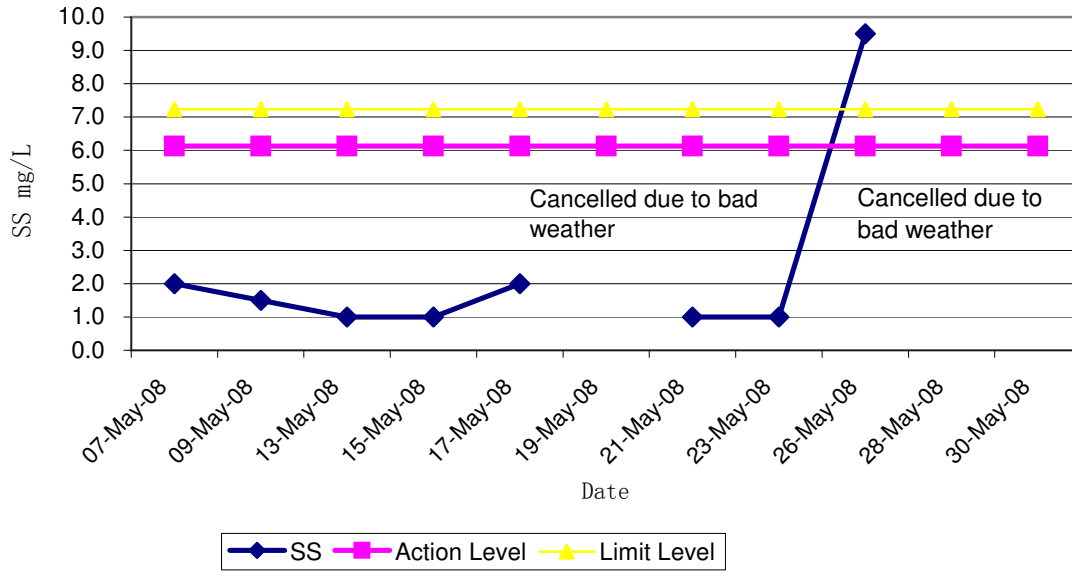
Contract No. DC/2007/12 - Design and Construction of Tsuen Wan Drainage Tunnel
 Water Quality Results at Hong Hoi Chee Jong Temple (I-2)
 May 2008



Contract No. DC/2007/12 - Design and Construction of Tsuen Wan Drainage Tunnel
 Water Quality Results at Hong Hoi Chee Jong Temple (I-2-C)
 May 2008



Contract No. DC/2007/12 - Design and Construction of Tsuen Wan Drainage Tunnel
 Water Quality Results at Squatters (I-3)
 May 2008



Contract No. DC/2007/12 - Design and Construction of Tsuen Wan Drainage Tunnel
 Water Quality Results at Squatters (I-3-C)
 May 2008

